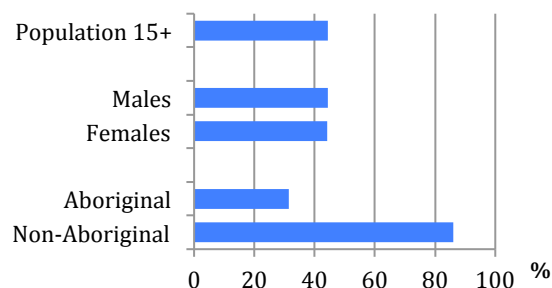


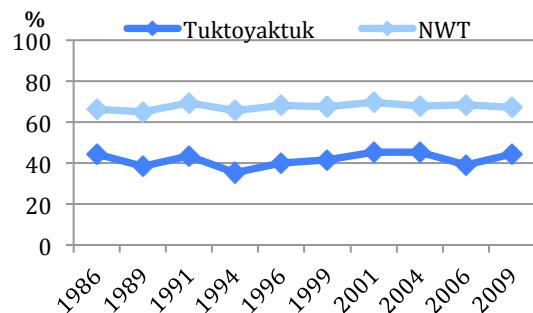
## Labour Force Activity

**2009 Employment Rates  
by Selected Characteristics**



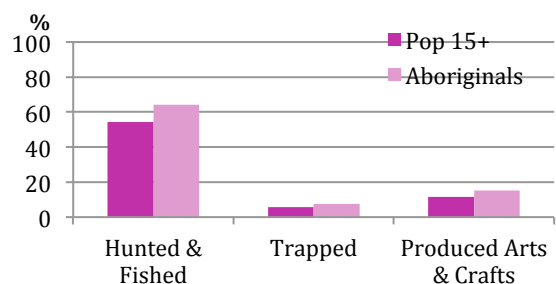
- 44% of the population were employed.
- The employment rate for aboriginal persons was 32%.
- The Tuktoyaktuk employment rate is below the NWT rate.

**Employment Rate  
1986 to 2009**



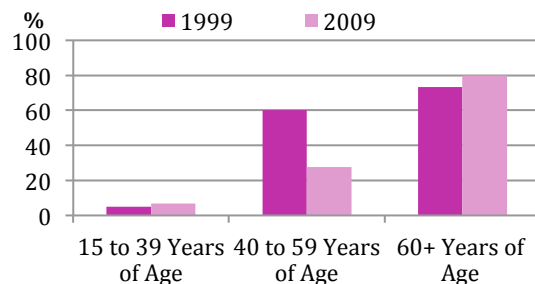
## Traditional Activities and Language

**Participation in Traditional Activities  
During 2008**



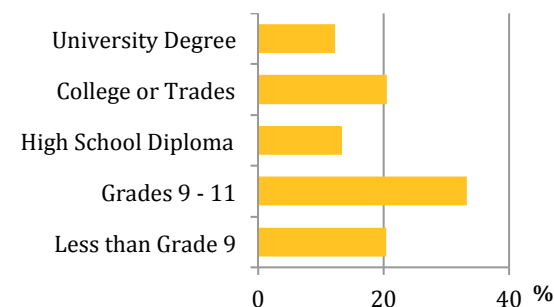
- In 2008, more aboriginals hunted and fished rather than trapped or produced arts & crafts.
- 64% of the aboriginal population hunted and fished in 2008.
- Overall, the proportion of aboriginal persons that speak an aboriginal language fell from 25% in 1999 to 22% in 2009.

**Aboriginals 15+ That Speak an  
Aboriginal Language  
1999 & 2009**



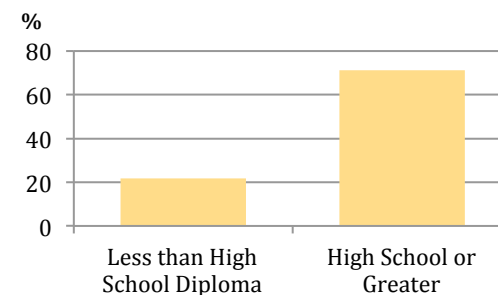
## Education

**Highest Level of Schooling  
2009**



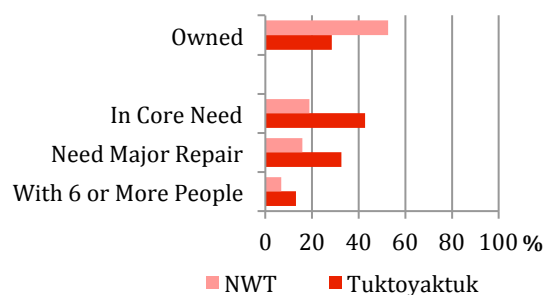
- 46% of the population have at least a high school education.
- Those with a high school education or greater are more likely to be employed.

**Employment Rate by Highest Level of  
Schooling, 2009**



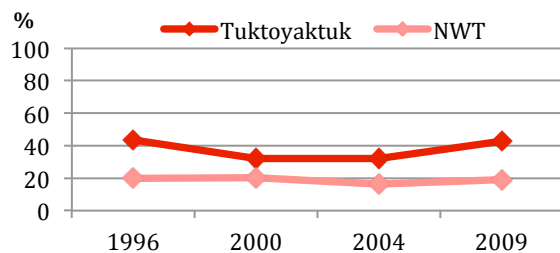
## Housing

### Housing by Selected Characteristics 2009



- 29% of households are owned.
- 43% of the households are in core need.
- The percentage of households in core need has been consistently above the NWT level.

### Households in Core Need 1996 to 2009



## Did You Know ...

- 65% of the population in Tuktoyaktuk smoked in 2009.
- 20% of the population volunteered in 2008.
- 43% of homes have the internet.

You can visit the NWT Bureau of Statistics for additional information for your community:

[www.statsnwt.ca](http://www.statsnwt.ca)

You can contact us at:  
(867) 873-7147

This pamphlet contains just a portion of the data available for your community.

You can use community level data for:

- Strategic planning
- Monitoring programs
- Developing funding proposals

## Tuktoyaktuk

### 2009 NWT Community Survey Results

Thank you for your participation