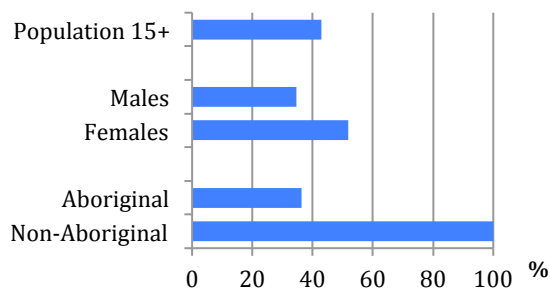


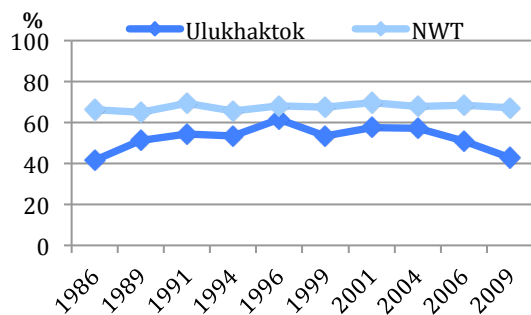
## Labour Force Activity

### 2009 Employment Rates by Selected Characteristics



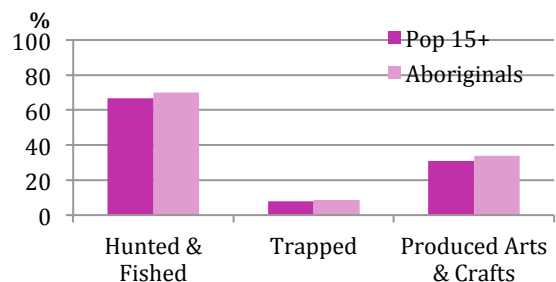
- Under half the population was employed.
- The employment rate for aboriginal persons was 36%
- The Ulukhaktok employment rate is below the NWT rate.

### Employment Rate 1986 to 2009



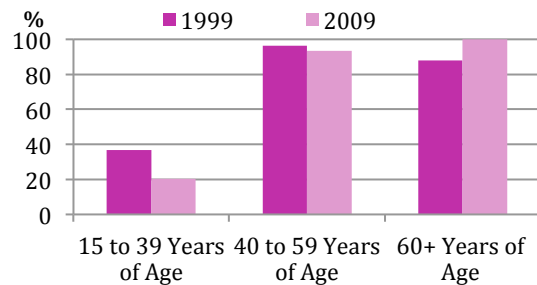
## Traditional Activities and Language

### Participation in Traditional Activities During 2008



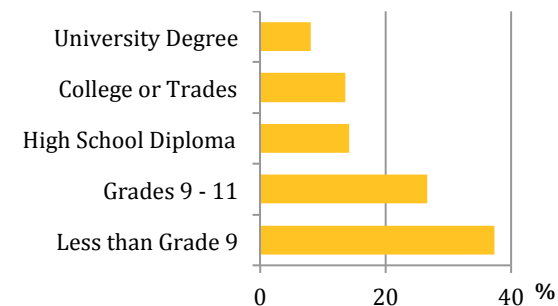
- In 2008, more aboriginals hunted and fished rather than trapped or produced arts & crafts.
- 70% of the aboriginal population hunted and fished in 2008.
- Overall, 60% of aboriginal persons speak an aboriginal language.

### Aboriginals 15+ That Speak an Aboriginal Language 1999 & 2009



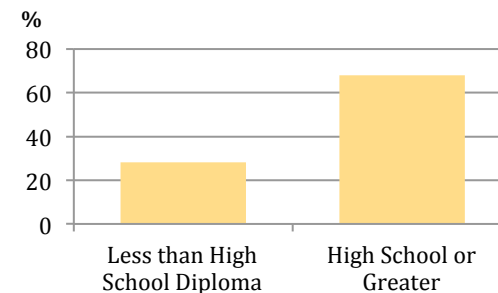
## Education

### Highest Level of Schooling 2009



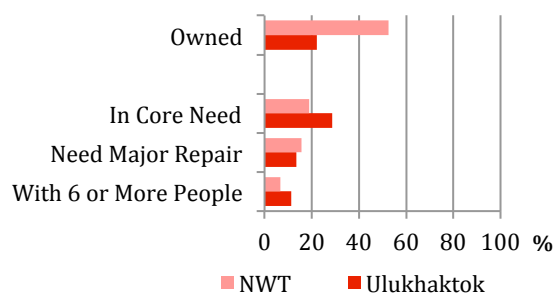
- Many people have less than a high school education.
- Those with a high school education or greater are more likely to be employed.

### Employment Rate by Highest Level of Schooling, 2009



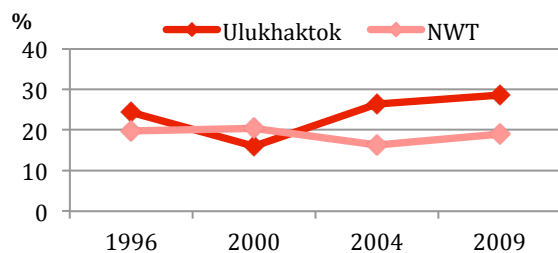
## Housing

### Housing by Selected Characteristics 2009



- 22% of households are owned.
- Less than 30% of households are in core need.
- The percentage of households in core need has remained below 30% since 1996.

### Households in Core Need 1996 to 2009



## Did You Know ...

- 60% of the population in Ulukhaktok smoked in 2009.
- 33% of the population volunteered in 2008.
- 48% of households have access the internet.

You can visit the NWT Bureau of Statistics for additional information for your community:

[www.statsnwt.ca](http://www.statsnwt.ca)

You can contact us at:  
(867) 873-7147

This pamphlet contains just a portion of the data available for your community.

You can use community level data for:

- Strategic planning
- Monitoring programs
- Developing funding proposals

# Ulukhaktok

## 2009 NWT Community Survey Results

Thank you for your participation