

# NWT Labour Force Activity

July 2016

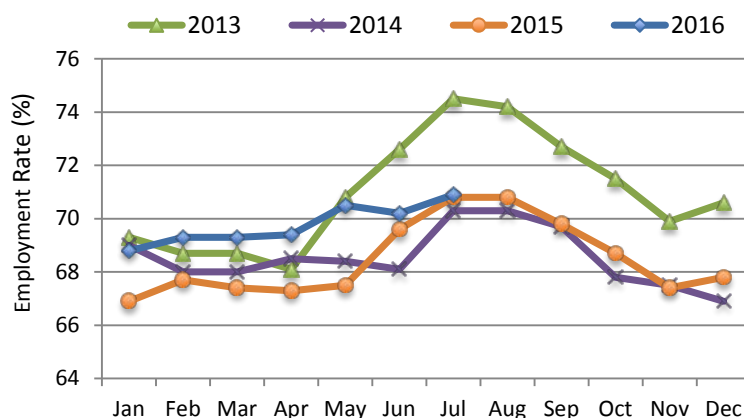
## OVERVIEW

In July 2016, Statistics Canada estimated that 23,100 persons were employed in the Northwest Territories (NWT). This represents an employment rate of 70.9%. The July employment rate was the second highest in Canada, followed by Alberta at 66.8%. Yukon’s employment rate was the highest (74.2%), while nationally Canada’s employment rate was 62.0%. Since July 2015, employment in the NWT increased by 2.7% or 600 persons.

Table 1: Labour Force Statistics - Northwest Territories

	July-2016	June-2016	May-2015	Changes from July 2015 - July 2016	
				Number	%
<b>Population 15+</b>	<b>32,600</b>	<b>32,600</b>	<b>31,800</b>	<b>800</b>	<b>2.5</b>
Labour force	25,100	24,900	24,500	600	2.4
Employment	23,100	22,900	22,500	600	2.7
Full-time	20,100	19,800	19,900	200	1.0
Part-time	2,900	3,100	2,600	300	11.5
Unemployment	2,100	2,000	2,000	100	5.0
Participation rate (%)	77.0	76.4	77.0		
Unemployment rate (%)	8.4	8.0	8.2		
Employment rate (%)	70.9	70.2	70.8		

Figure 1: Monthly Employment Rates Northwest Territories, 2013 – 2016



Between June and July 2016, the NWT employment rate rose 0.7 percentage points and was the highest rate for July since 2013 (Figure 1). The month over month employment rate increase likely reflects the peak of the seasonal summer employment.

## EMPLOYMENT RATES BY KEY DEMOGRAPHIC CHARACTERISTICS

Between June 2016 and July 2016, the employment rate increased by 3.4 percentage points for youths aged 15 to 24 and changed little for those 25 years and older. Over the same period, the employment rate rose by 2.5 percentage points for males and declined by 1.9 percentage points for females (Figure 2 and Figure 3).

Figure 2: Employment Rates by Age Group, June 2016 - July 2016

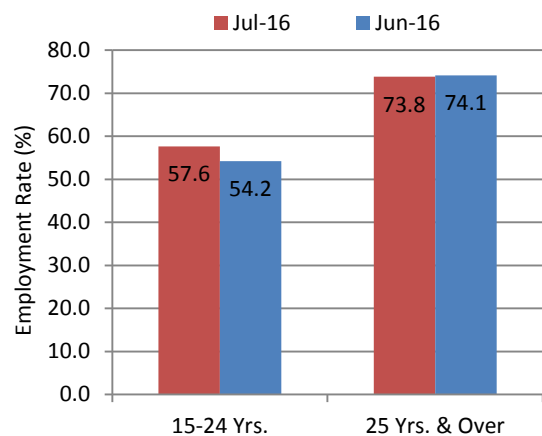
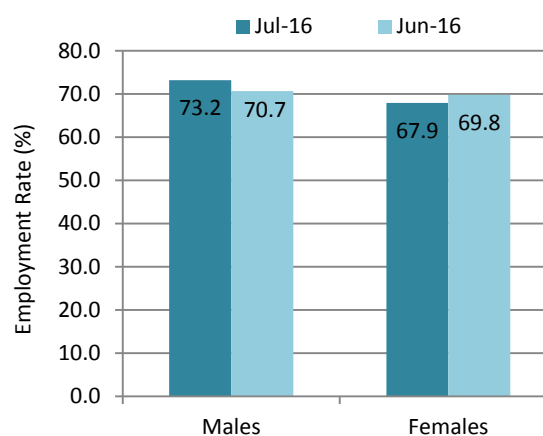


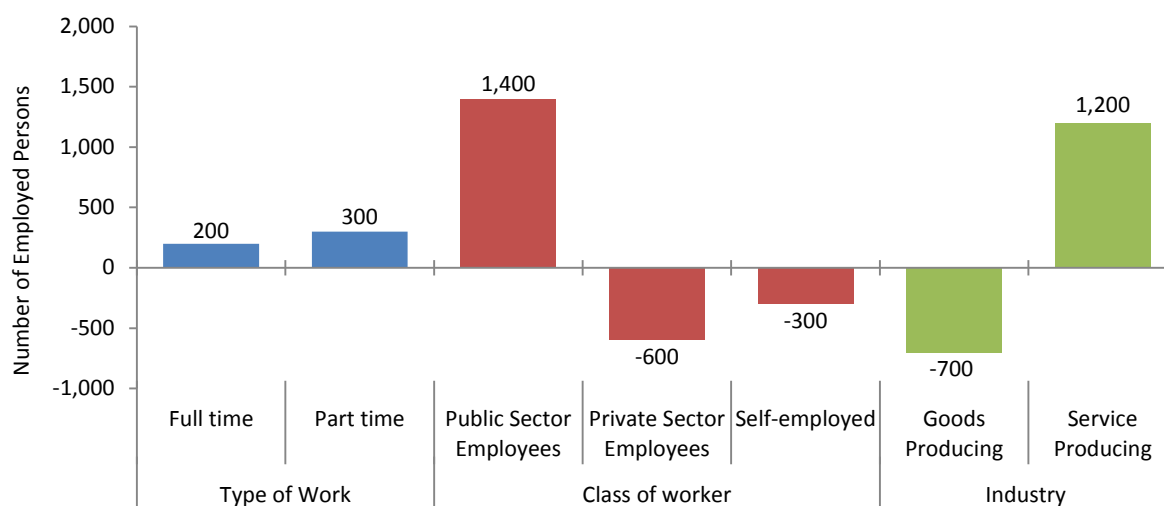
Figure 3: Employment Rates by Sex, June 2016 - July 2016



## EMPLOYMENT BY TYPE OF WORKER, CLASS OF WORKER & INDUSTRY

Compared to July 2015, the majority of the job growth was in the public sector and the service producing industries (Figure 4).

Figure 4: Changes in the Number of Employed Persons from Previous Year



## HISTORICAL LABOUR FORCE ACTIVITY

Table 2: Labour Force Activity - Northwest Territories

	Population 15 & Over	Labour Force	Employed	Unem- ployed	Not in the Labour Force	Partic- ipation Rate	Unemp- loyment Rate	Employ- ment Rate
Jul-16	32,600	25,100	23,100	2,100	7,500	77.0	8.4	70.9
Jun-16	32,600	24,900	22,900	2,000	7,600	76.4	8.0	70.2
May-16	32,500	24,600	22,900	1,700	7,900	75.7	6.9	70.5
Apr-16	32,400	24,100	22,500	1,600	8,200	74.4	6.6	69.4
Mar-16	32,300	24,200	22,400	1,800	8,000	74.9	7.4	69.3
Feb-16	32,200	24,400	22,300	2,100	7,800	75.8	8.6	69.3
Jan-16	32,100	24,400	22,100	2,300	7,600	76.0	9.4	68.8
Dec-15	32,000	24,100	21,700	2,400	7,900	75.3	10.0	67.8
Nov-15	31,900	24,000	21,500	2,500	8,000	75.2	10.4	67.4
Oct-15	31,900	24,100	21,900	2,200	7,700	75.5	9.1	68.7
Sep-15	31,800	24,300	22,200	2,100	7,500	76.4	8.6	69.8
Aug-15	31,800	24,500	22,500	2,000	7,300	77.0	8.2	70.8
Previous Years:								
Jul-15	31,800	24,500	22,500	2,000	7,300	77.0	8.2	70.8
Jul-14	32,300	24,900	22,700	2,200	7,400	77.1	8.8	70.3
Jul-13	32,600	26,200	24,300	1,900	6,400	80.4	7.3	74.5
Jul-12	32,400	25,800	23,500	2,300	6,600	79.6	8.9	72.5
Jul-11	32,300	25,500	23,500	2,000	6,800	78.9	7.8	72.8
Jul-10	32,000	24,000	21,900	2,100	8,100	75.0	8.8	68.4
Jul-09	31,800	22,800	21,200	1,600	9,000	71.7	7.0	66.7
Jul-08	31,800	24,600	22,600	2,000	7,200	77.4	8.1	71.1
Jul-07	31,600	25,200	23,500	1,600	6,400	79.7	6.3	74.4
Jul-06	31,200	25,100	23,500	1,600	6,100	80.4	6.4	75.3

Information on the territorial labour market is a result of the extension of Statistics Canada's national Labour Force Survey (LFS) to the Northwest Territories. Data presented for the Northwest Territories is based on three-month moving averages, with survey counts rounded to the nearest 100 persons.

For additional information on the monthly release of labour force survey results for the Northwest Territories, visit the NWT Bureau of Statistics website at <http://www.statsnwt.ca/> or call 1-888-782-8768 (1-888-STATSNT).

Next Release: September 9, 2016