

NWT Labour Force Activity

May 2016

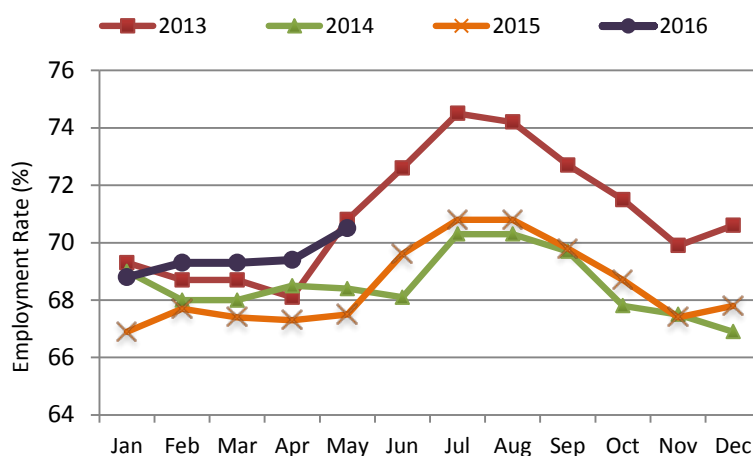
OVERVIEW

In May 2016, Statistics Canada estimated that 22,900 persons were employed in the Northwest Territories (NWT). This represents an employment rate of 70.5% which was the highest in Canada followed by Yukon (69.1%) and Alberta (66.5%). Nationally, Canada's employment rate was 60.8%. Since May 2015, employment in the NWT increased by 6.0% or 1,300 persons.

Table 1: Labour Force Statistics - Northwest Territories

	May-2016	April-2016	May-2015	Changes from May 2015 - May 2016	
				Number	%
Population 15+	32,500	32,400	32,000	500	1.6
Labour force	24,600	24,100	23,500	1,100	4.7
Employment	22,900	22,500	21,600	1,300	6.0
Full-time	19,600	19,500	19,000	600	3.2
Part-time	3,300	3,000	2,600	700	26.9
Unemployment	1,700	1,600	1,900	(200)	-10.5
Participation rate (%)	75.7	74.4	73.4		
Unemployment rate (%)	6.9	6.6	8.1		
Employment rate (%)	70.5	69.4	67.5		

Figure 1: Monthly Employment Rates Northwest Territories, 2013-2016



Between April and May 2016, the employment rate rose 1.1 percentage points, and was the highest rate for May since 2013. The month over month employment rate increase likely reflects the start of the seasonal summer employment peak.

EMPLOYMENT RATES BY KEY DEMOGRAPHIC CHARACTERISTICS

Between May 2015 and May 2016, the employment rate increased by 9.1 percentage points for youths aged 15 to 24 and by 1.4 percentage points for those 25 years and older. Over the same period, the employment rate rose by 1.2 percentage points in Yellowknife and 5.0 percentage points outside Yellowknife (Figure 2 and Figure 3).

Figure 2: Employment Rates by Age Group, May 2015 - May 2016

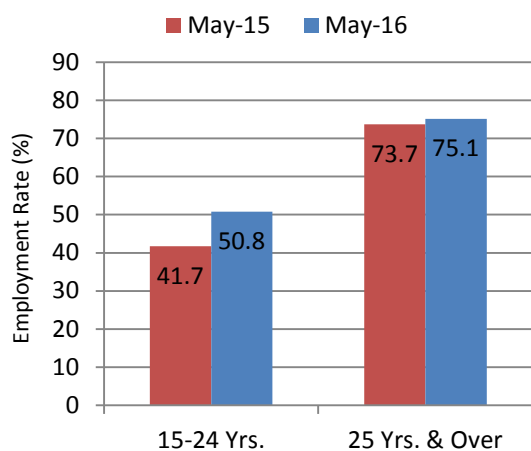
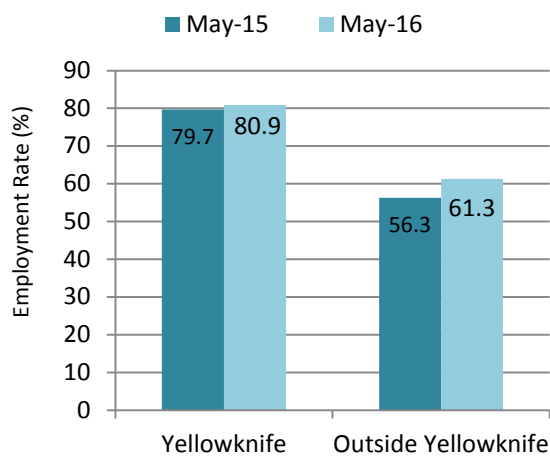


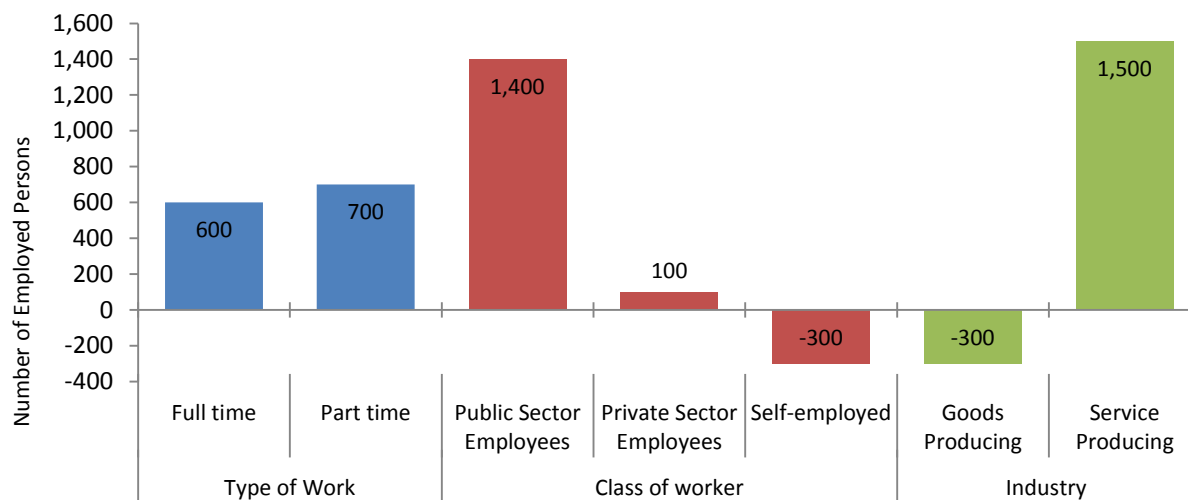
Figure 3: Employment Rates by Geography, May 2015 - May 2016



EMPLOYMENT BY TYPE OF WORKER, CLASS OF WORKER & INDUSTRY

Compared to May 2015, the majority of the job growth was in the public sector, with an almost even split between full-time and part-time employment (Figure 4).

Figure 4: Changes in the Number of Employed Persons from Previous Year



HISTORICAL LABOUR FORCE ACTIVITY

Table 2: Labour Force Activity - Northwest Territories

	Population 15 & Over	Labour Force	Employed	Unem- ployed	Not in the Labour Force	Partic- ipation Rate	Unemp- loyment Rate	Employ- ment Rate
May-16	32,500	24,600	22,900	1,700	7,900	75.7	6.9	70.5
Apr-16	32,400	24,100	22,500	1,600	8,200	74.4	6.6	69.4
Mar-16	32,300	24,200	22,400	1,800	8,000	74.9	7.4	69.3
Feb-16	32,200	24,400	22,300	2,100	7,800	75.8	8.6	69.3
Jan-16	32,100	24,400	22,100	2,300	7,600	76.0	9.4	68.8
Dec-15	32,000	24,100	21,700	2,400	7,900	75.3	10.0	67.8
Nov-15	31,900	24,000	21,500	2,500	8,000	75.2	10.4	67.4
Oct-15	31,900	24,100	21,900	2,200	7,700	75.5	9.1	68.7
Sep-15	31,800	24,300	22,200	2,100	7,500	76.4	8.6	69.8
Aug-15	31,800	24,500	22,500	2,000	7,300	77.0	8.2	70.8
Jul-15	31,800	24,500	22,500	2,000	7,300	77.0	8.2	70.8
Jun-15	31,900	23,800	22,200	1,700	8,000	74.6	7.1	69.6
Previous Years:								
May-15	32,000	23,500	21,600	1,900	8,500	73.4	8.1	67.5
May-14	32,300	24,300	22,100	2,200	8,000	75.2	9.1	68.4
May-13	32,500	25,200	23,000	2,200	7,300	77.5	8.7	70.8
May-12	32,400	24,700	22,500	2,200	7,700	76.2	8.9	69.4
May-11	32,200	24,700	22,700	2,000	7,500	76.7	8.1	70.5
May-10	31,900	22,400	20,700	1,700	9,600	70.2	7.6	64.9
May-09	31,800	22,700	21,100	1,600	9,100	71.4	7.0	66.4
May-08	31,800	23,600	22,000	1,600	8,200	74.2	6.8	69.2
May-07	31,500	24,700	23,300	1,400	6,800	78.4	5.7	74.0
May-06	31,100	24,200	23,100	1,100	6,900	77.8	4.5	74.3

Information on the territorial labour market is a result of the extension of Statistics Canada's national Labour Force Survey (LFS) to the Northwest Territories. Data presented for the Northwest Territories is based on three-month moving averages, with survey counts rounded to the nearest 100 persons.

For additional information on the monthly release of labour force survey results for the Northwest Territories, visit the NWT Bureau of Statistics website at <http://www.statsnwt.ca/> or call 1-888-782-8768 (1-888-STATSNT).

Next Release: July 8, 2016