

Consumer Price Index

December 2016

OVERVIEW

Information released today by Statistics Canada indicates that the Yellowknife All-Items Consumer Price Index in December rose 1.0% compared to one year ago. By comparison, the annual price increase was 1.5% for Canada, 1.1% for Edmonton, 1.6% for Whitehorse and 2.5% for Iqaluit.

ALL-ITEMS CONSUMER PRICE INDEX (2002=100)

	16-Dec	16-Nov	15-Dec	% Change from		—12-Month Average—		
				16-Nov	15-Dec	16-Jan	15-Jan	%
				16-Nov	15-Dec	16-Dec	15-Dec	Change
Yellowknife	131.9	132.5	130.6	-0.5	1.0	131.9	130.4	1.2
Canada	128.4	128.6	126.5	-0.2	1.5	128.4	126.6	1.4
Edmonton	134.7	134.8	133.2	-0.1	1.1	134.9	133.4	1.1
Whitehorse	126.1	126.1	124.1	-	1.6	125.4	124.1	1.0
Iqaluit	123.8	124.0	120.8	-0.2	2.5	123.4	120.4	2.5

Compared to December 2015, prices increased in Yellowknife for most major components with the exception of food and shelter. Higher prices for clothing & footwear (4.0%) and alcoholic beverages & tobacco products (3.3%) were offset by lower prices for food (-1.0%) and shelter (-0.2%).

Figure 1
Calendar Year Inflation Rate (Jan - Dec)
Canada & Yellowknife, 2000 to 2016

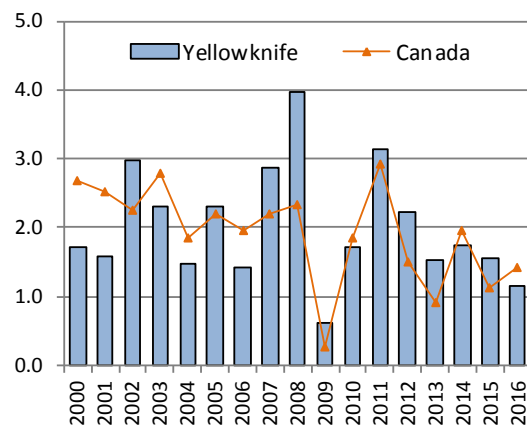


Figure 1 shows how prices change from one year to the next based on the 12-month average index. Businesses tend to use this rate for the calendar year (January to December) to adjust salaries or evaluate the prices of their goods and services.

Between 2015 and 2016, the calendar year inflation rate for Yellowknife was 1.2%. This was a slight decrease from 2015, and the lowest rate for Yellowknife in 7 years. In contrast, the Canadian inflation rate increased to 1.4% in 2016.

CONSUMER PRICE INDEX, DECEMBER 2016
SELECTED INDEXES, YELLOWKNIFE (2002 = 100)

	16-Dec	16-Nov	15-Dec	% Change from	
				16-Nov	15-Dec
All Items	131.9	132.5	130.6	-0.5	1.0
Food	139.4	141.8	140.8	-1.7	-1.0
Food from Stores	138.0	141.0	140.2	-2.1	-1.6
Food from Restaurants	142.8	142.8	141.5	-	0.9
Shelter	149.7	151.2	150.0	-1.0	-0.2
Water, Fuel & Electricity	187.8	187.8	182.6	-	2.8
Household Operations & Furnishings	116.2	116.2	115.1	-	1.0
Household Operations	122.5	122.3	122.6	0.2	-0.1
Household Furnishings	102.4	102.7	99.1	-0.3	3.3
Clothing & Footwear	106.8	106.7	102.7	0.1	4.0
Clothing	100.2	100.0	95.4	0.2	5.0
Footwear	96.6	96.6	95.8	-	0.8
Clothing Accessories & Jewellery	150.7	150.7	147.4	-	2.2
Clothing Material, Notions & Services	123.0	123.0	110.4	-	11.4
Transportation	126.7	126.6	123.4	0.1	2.7
Private Transportation	125.9	126.7	123.9	-0.6	1.6
Public Transportation	132.8	129.7	124.7	2.4	6.5
Health & Personal Care	121.0	118.9	120.9	1.8	0.1
Health Care	117.6	117.8	117.3	-0.2	0.3
Personal Care	124.5	120.9	124.6	3.0	-0.1
Recreation, Education & Reading	103.9	103.9	101.4	-	2.5
Recreation	99.1	99.2	96.6	-0.1	2.6
Education & Reading	132.4	131.8	130.3	0.5	1.6
Alcoholic Beverages & Tobacco Products	169.5	169.2	164.1	0.2	3.3
Alcoholic Beverages	144.9	144.8	144.2	0.1	0.5
Tobacco Products & Smokers' Supplies	202.9	202.3	189.1	0.3	7.3
SPECIAL AGGREGATES:					
All-Items Excluding:					
Food	130.5	130.8	128.7	-0.2	1.4
Energy	128.1	128.7	127.0	-0.5	0.9
Shelter	124.2	124.5	122.4	-0.2	1.5
Alcoholic Beverages	131.5	132.1	130.3	-0.5	0.9
Tobacco Products	130.6	131.2	129.5	-0.5	0.8
Housing (1986 Definition)	139.3	140.2	139.1	-0.6	0.1
ENERGY AND ITS COMPONENTS:					
Energy	168.9	169.3	165.4	-0.2	2.1
Electricity	190.9	190.9	188.0	-	1.5
Fuel Oil And Other Fuels	207.5	207.5	198.7	-	4.4
Natural Gas
Gasoline	130.5	131.3	129.0	-0.6	1.2
Fuel, Parts and Supplies for Rect'l Vehicles

Notes:

1. Source: Statistics Canada, CANSIM Table 326-0020
2. CPI values for Yellowknife and Whitehorse include estimates of price changes for owned accommodation based on the price of rental accommodation. As a result, the all-items indexes published for these centres are not strictly comparable to those for Canada and Edmonton.

Next release of CPI: February 24, 2017.