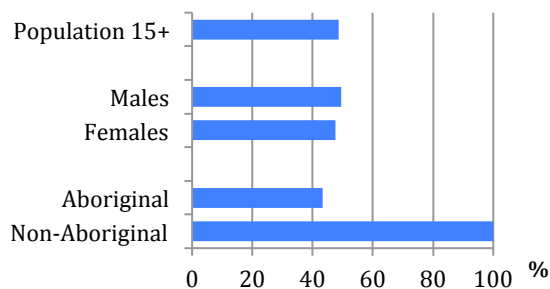


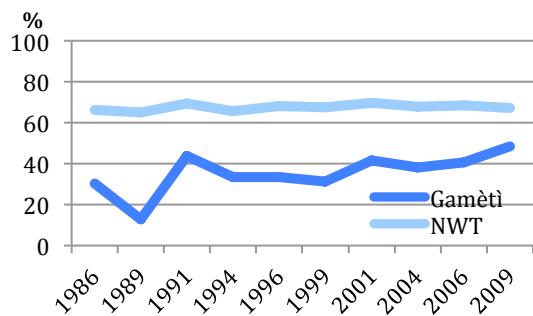
Labour Force Activity

2009 Employment Rates by Selected Characteristics



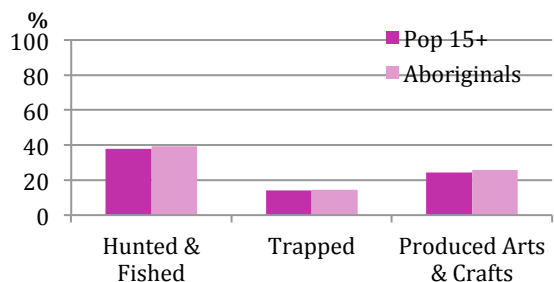
- About half the population was employed.
- The employment rate for aboriginal persons was 43%
- The Gamètì employment rate is below the NWT rate, but the difference is decreasing.

Employment Rate 1986 to 2009



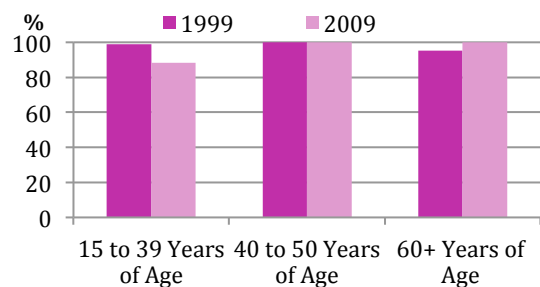
Traditional Activities and Language

Participation in Traditional Activities During 2008



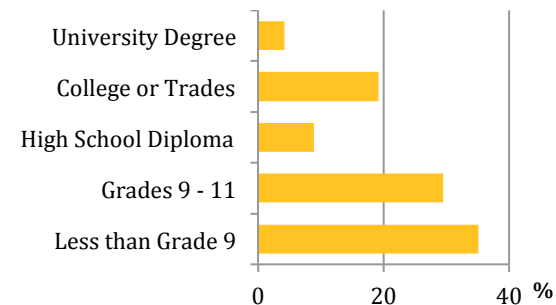
- In 2008, more aboriginals hunted and fished rather than trapped or produced arts & crafts.
- 39% of the aboriginal population hunted and fished in 2008.
- Almost all aboriginals speak an aboriginal language.

Aboriginals 15+ That Speak an Aboriginal Language 1999 & 2009



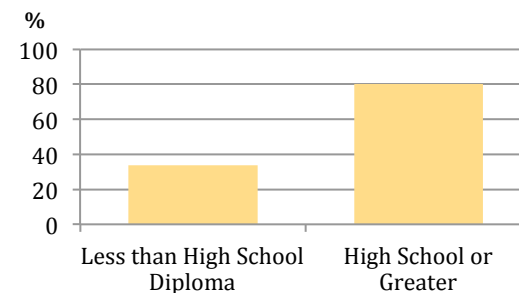
Education

Highest Level of School 2009



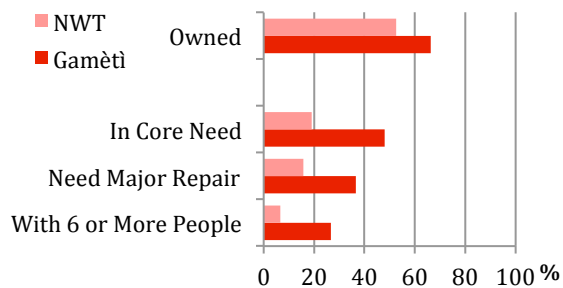
- 32% of the population has at least a high school education.
- Those with a high school education or greater are more likely to be employed.

Employment by Highest Level of Schooling, 2009



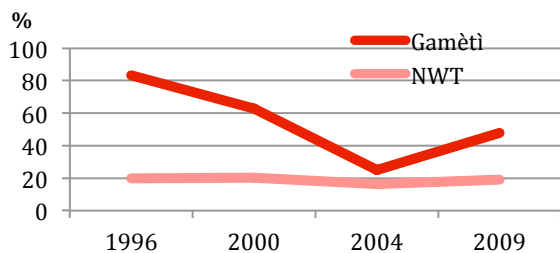
Housing

Housing by Selected Characteristics 2009



- Over 60% of households are owned.
- Just under half of the households are in core need.
- The percentage of households in core need has been consistently above the NWT level.

Households in Core Need 1996 to 2009



Did You Know ...

- Just under half of the population smoked in 2009.
- Just over 25% of the population volunteered in 2008.
- 41% of homes have the internet.

Visit the NWT Bureau of Statistics for additional information for your community:

www.statsnwt.ca

You can contact us at:
(867) 873-7147

This pamphlet contains just a portion of the available data for your community.

You can use community level data for:

- Strategic planning
- Monitoring programs
- Developing funding proposals

Gamètì

2009 NWT Community Survey Results

Thank you for your participation