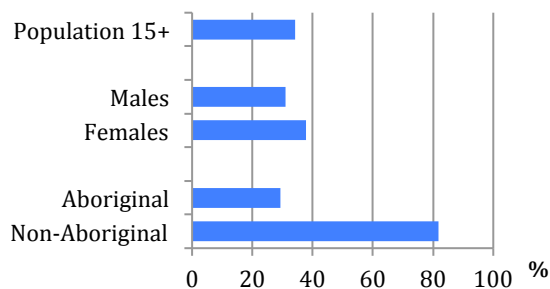


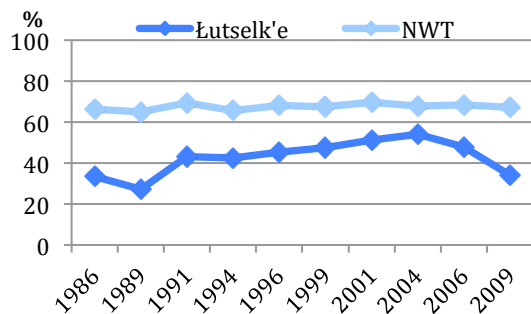
## Labour Force Activity

### 2009 Employment Rates by Selected Characteristics



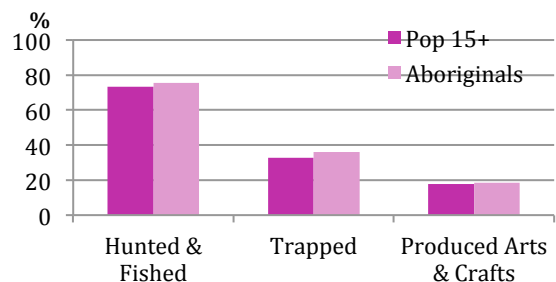
- 34% of the population were employed.
- The employment rate for aboriginal persons was 29%.
- The Łutsek'e employment rate is below the NWT rate.

### Employment Rate 1986 to 2009



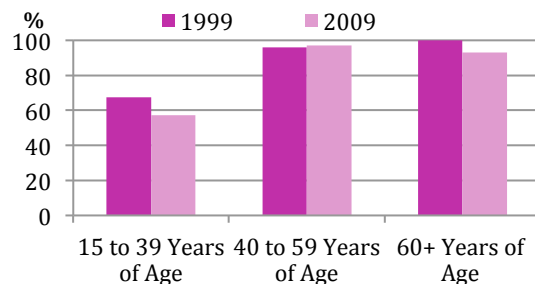
## Traditional Activities and Language

### Participation in Traditional Activities During 2008



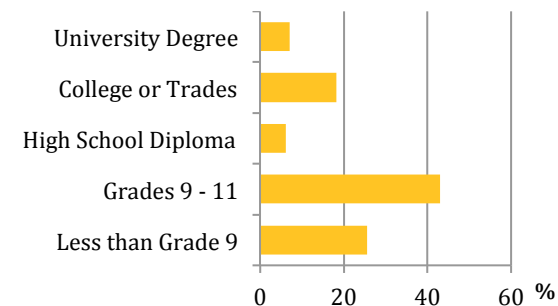
- In 2008, more aboriginals hunted and fished rather than trapped or produced arts & crafts.
- 76% of the aboriginal population hunted and fished in 2008.
- Overall, the proportion of aboriginal persons that speak an aboriginal language fell from 79% in 1999 to 77% in 2009.

### Aboriginals 15+ That Speak an Aboriginal Language 1999 & 2009



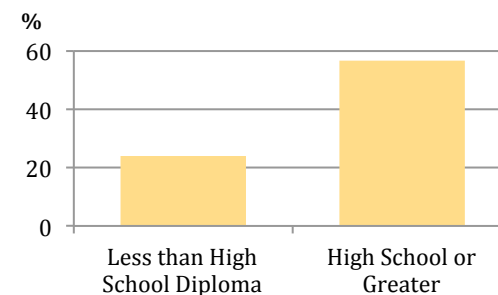
## Education

### Highest Level of Schooling 2009



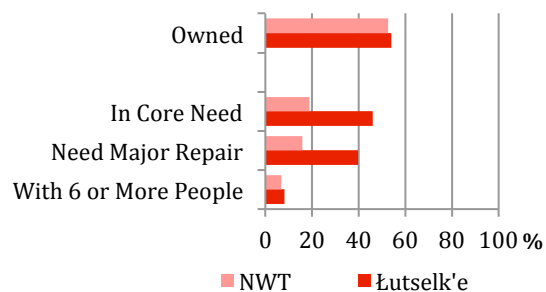
- 31% of the population has at least a high school education.
- Those with a high school education or greater are more likely to be employed.

### Employment Rate by Highest Level of Schooling, 2009



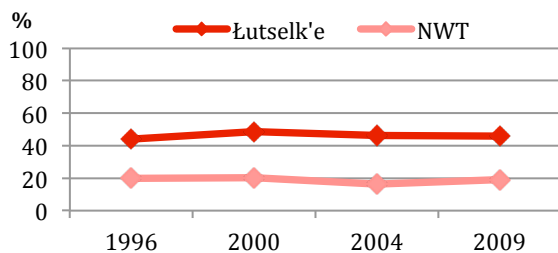
## Housing

### Housing by Selected Characteristics 2009



- 54% of households are owned.
- 46% of the households are in core need.
- The percentage of households in core need has been consistently above the NWT level.

### Households in Core Need 1996 to 2009



## Did You Know ...

- 60% of the population in Łutsek'e smoked in 2009.
- 40% of the population volunteered in 2008.
- 17% of homes have the internet.

You can visit the NWT Bureau of Statistics for additional information for your community:

[www.statsnwt.ca](http://www.statsnwt.ca)

You can contact us at:  
(867) 873-7147

This pamphlet contains just a portion of the data available for your community.

You can use community level data for:

- Strategic planning
- Monitoring programs
- Developing funding proposals

# Łutsek'e

## 2009 NWT Community Survey Results

Thank you for your participation