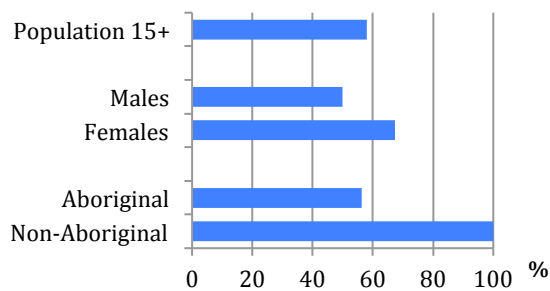


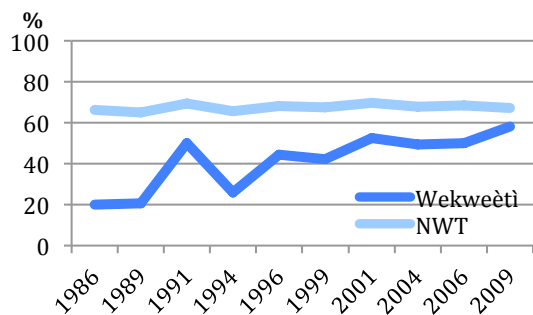
## Labour Force Activity

### 2009 Employment Rates by Selected Characteristics



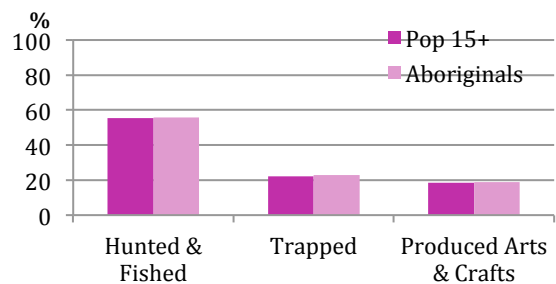
- Almost 60% of the population was employed.
- The employment rate for aboriginal persons was 56%.
- The Wekweètì employment rate is below the NWT rate, but the difference is decreasing.

### Employment Rate 1986 to 2009



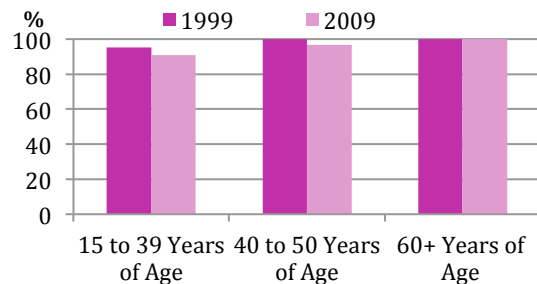
## Traditional Activities and Language

### Participation in Traditional Activities During 2008



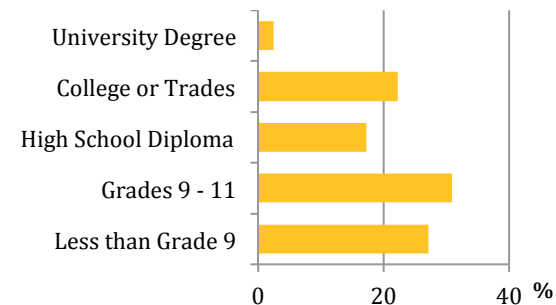
- In 2008, more aboriginals hunted and fished rather than trapped or produced arts & crafts.
- Almost 60% of aboriginals hunted and fished in 2008.
- Almost all aboriginals speak an aboriginal language.

### Aboriginals 15+ That Speak an Aboriginal Language 1999 & 2009



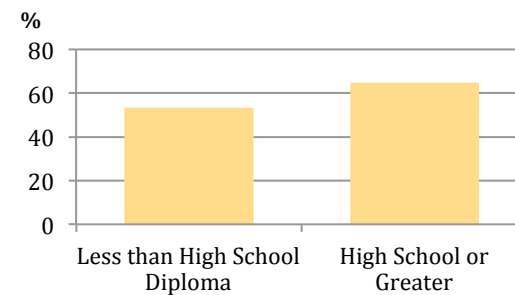
## Education

### Highest Level of School 2009



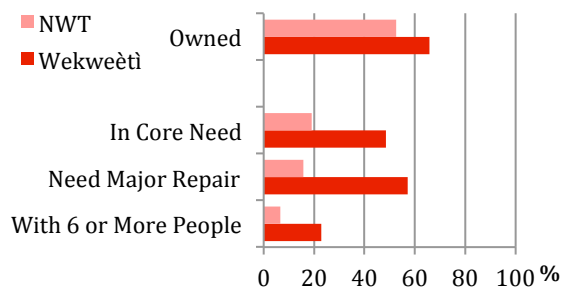
- 42% of the population has at least a high school education.
- Those with a high school education or greater are more likely to be employed.

### Employment by Highest Level of Schooling, 2009



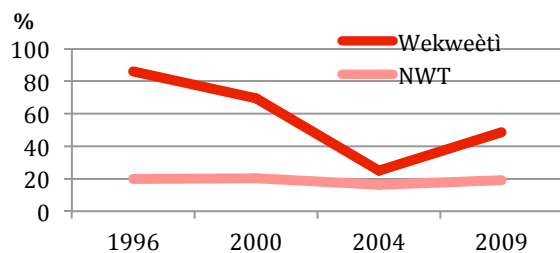
## Housing

### Housing by Selected Characteristics 2009



- 66% of households are owned.
- Just under half of the households are in core need.
- The percentage of households in core need has been consistently above the NWT level.

### Households in Core Need 1996 to 2009



## Did You Know ...

- Just under half of the population smoked in 2009.
- Just over 28% of the population volunteered in 2008.
- 43% of homes have the internet.

Visit the NWT Bureau of Statistics for additional information for your community:

[www.statsnwt.ca](http://www.statsnwt.ca)

You can contact us at:  
(867) 873-7147

This pamphlet contains just a portion of the data available for your community.

You can use community level data for:

- Strategic planning
- Monitoring programs
- Developing funding proposals

# Wekweètì

## 2009 NWT Community Survey Results

Thank you for your participation