

May 08, 2015

## NWT Labour Force Activity - April 2015 -

Statistics Canada estimates that in April 2015, out of 32,100 residents 15 years of age and older 21,600 persons were employed in the Northwest Territories. This represents an employment rate of 67.3% while nationally, Canada's employment rate was 60.4%.

For April 2015, the number of employed persons and the employment rate were similar to the previous month but remain lower than in 2014. A decrease in the number of unemployed persons resulted in a drop in the unemployment rate by over a percentage point, compared to March 2015 and nearly two percentage points compared to April 2014. Those not in the labour force increased both from last month and from last year.

**Table 1 Monthly Highlights  
Northwest Territories, April 2015**

	Apr-15	Mar-15	Apr-14
Population	32,100	32,200	32,400
Labour Force	23,200	23,600	24,200
Employed	21,600	21,700	22,200
Unemployed	1,600	1,900	2,100
Not in Labour Force	8,800	8,500	8,200
Participation (%)	72.3	73.3	74.7
Employment (%)	67.3	67.4	68.5
Unemployment (%)	6.9	8.1	8.7

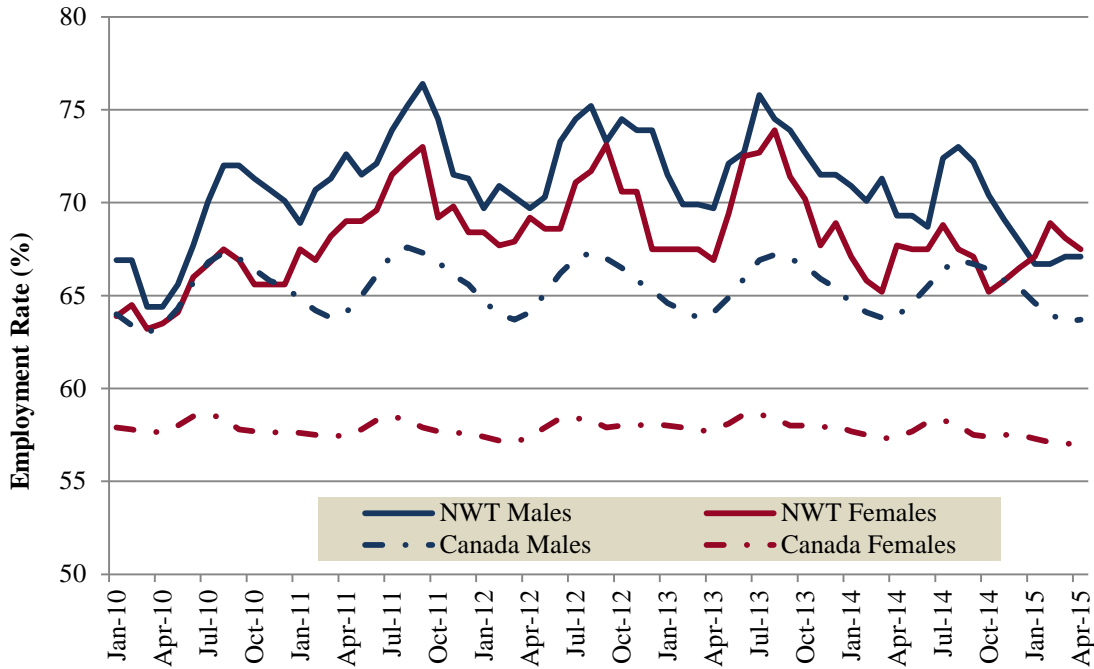
Employment rates by key characteristics in April 2015 were similar to those in March 2015 (Table 2). Compared to one year ago, employment rates decreased for those living outside Yellowknife, males and non-aboriginal persons.

**Table 2 Employment Rates by Key Characteristics  
Northwest Territories**

	Apr-15		Mar-15		Apr-14	
	Employed (Persons)	Employment Rate (%)	Employed (Persons)	Employment Rate (%)	Employed (Persons)	Employment Rate (%)
<b>Northwest Territories</b>	21,600	67.3	21,700	67.4	22,200	68.5
15-24 Yrs.	2,700	44.3	2,600	42.6	2,800	44.4
25 Yrs. & Over	18,900	72.7	19,100	73.2	19,400	74.3
Males	10,800	67.1	10,800	67.1	11,300	69.3
Females	10,800	67.5	10,900	68.1	10,900	67.7
Aboriginal	7,800	52.7	7,900	52.7	7,500	51.7
Non-Aboriginal	13,900	80.3	13,800	80.2	14,700	82.1
Yellowknife	12,300	79.4	12,200	79.2	12,600	78.3
Other	9,300	56.0	9,500	56.5	9,600	58.9

Looking more closely at historical employment rates by sex, males have historically had higher employment rates than females (Figure 1) in both the Northwest Territories and Canada. The difference between the rates, however, is considerably smaller in the Northwest Territories and employment rates for females actually exceeded males for the past four months.

**Figure 1** *Employment Rates by Sex  
Canada & Northwest Territories, January 2010 - April 2015*



Between April 2014 and April 2015, the overall number of employed persons decreased by 600, all in full-time employment. There was a shift away from private employment to the public sector and a decline in self-employment.

**Table 3** *Monthly and Yearly Change in Employment by Selected Characteristics  
Northwest Territories, March 2015*

	Apr-15	Mar-15	Apr-14	Mar-15 to Apr-15 Change (persons)	Apr-14 to Apr-15
Total Employment	21,600	21,700	22,200	(100)	(600)
Full-time	19,000	19,400	19,600	(400)	(600)
Part-time	2,600	2,400	2,600	200	-
Employees	20,100	20,200	20,100	(100)	-
Public	9,500	9,500	8,800	-	700
Private	10,500	10,700	11,400	(200)	(900)
Self-employment	1,500	1,500	2,000	-	(500)
Goods Producing	3,500	3,700	3,600	(200)	(100)
Service Producing	18,100	18,000	18,600	100	(500)

The following table presents historical labour force activity in the Northwest Territories.

**Table 4**      **Labour Force Activity**  
**Northwest Territories**

	Population 15 & Over	Labour Force	Employed	Unem- ployed	Not in the Labour Force	Partic- ipation Rate	Unemp- loyment Rate	Employ- ment Rate
Apr-15	32,100	23,200	21,600	1,600	8,800	72.3	6.9	67.3
Mar-15	32,200	23,600	21,700	1,900	8,500	73.3	8.1	67.4
Feb-15	32,200	23,600	21,800	1,800	8,600	73.3	7.6	67.7
Jan-15	32,300	23,400	21,600	1,800	8,900	72.4	7.7	66.9
Dec-14	32,300	23,300	21,600	1,700	9,000	72.1	7.3	66.9
Nov-14	32,300	23,400	21,800	1,700	8,900	72.4	7.3	67.5
Oct-14	32,300	23,700	21,900	1,800	8,700	73.4	7.6	67.8
Sep-14	32,300	24,300	22,500	1,800	8,000	75.2	7.4	69.7
Aug-14	32,300	24,600	22,700	1,900	7,700	76.2	7.7	70.3
Jul-14	32,300	24,900	22,700	2,200	7,400	77.1	8.8	70.3
Jun-14	32,300	24,400	22,000	2,400	7,900	75.5	9.8	68.1
May-14	32,300	24,300	22,100	2,200	8,000	75.2	9.1	68.4
Previous Years:								
Apr-14	32,400	24,200	22,200	2,100	8,200	74.7	8.7	68.5
Apr-13	32,600	24,200	22,200	2,000	8,400	74.2	8.3	68.1
Apr-12	32,400	24,700	22,500	2,200	7,600	76.2	8.9	69.4
Apr-11	32,200	24,600	22,800	1,800	7,600	76.4	7.3	70.8
Apr-10	31,900	22,000	20,400	1,600	9,900	69.0	7.3	63.9
Apr-09	31,700	22,700	21,600	1,100	9,100	71.6	4.8	68.1
Apr-08	31,800	23,800	22,300	1,400	8,000	74.8	5.9	70.1
Apr-07	31,400	24,600	23,300	1,300	6,900	78.3	5.3	74.2
Apr-06	31,100	23,800	22,800	1,000	7,300	76.5	4.2	73.3
Apr-05	31,100	23,300	22,400	900	7,800	74.9	3.9	72.0

Information on the territorial labour market is a result of the extension of Statistics Canada's national labour force survey (LFS) to the Northwest Territories. Data presented for the Northwest Territories is based on three-month moving averages, with survey counts rounded to the nearest 100 persons.

For additional information on the monthly release of labour force survey results for the Northwest Territories, visit the NWT Bureau of Statistics website at <http://www.statsnwt.ca> or call (867) 873-7147.

Next Release: June 5, 2015.