

# NWT Labour Force Activity

Released: January 6, 2017

[www.statsnwt.ca](http://www.statsnwt.ca)

December 2016

## Overview

In December 2016, Statistics Canada estimated that 21,800 persons were employed in the Northwest Territories. This represents an employment rate of 67.3%. Canada's employment rate was 61.2%, with Yukon (71.1%) having the highest employment rate, followed by the Northwest Territories.

In the Northwest Territories, the employment rate decreased for the fourth consecutive month following historic seasonal employment patterns of higher employment rates during summer months and lower employment rates during winter months.

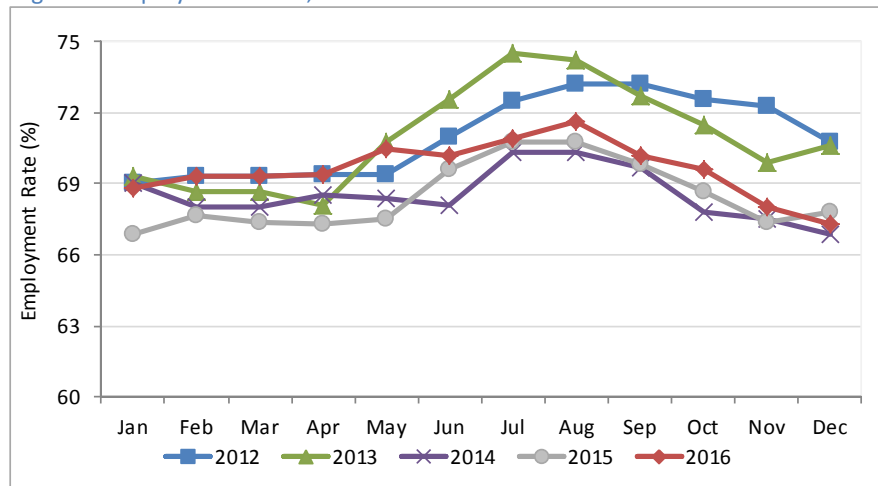
Monthly employment rates were higher in 2016 compared to the previous two years, with the exception of two months.

The unemployment rate dropped from 10.0% in December 2015 to 6.8% last month. This is a result of fewer people looking for employment in December 2016.

Table 1: Labour Force Statistics - Northwest Territories

|                        | Dec-2016 | Nov-2016 | Dec-2015 | Change from 12 months ago |        |
|------------------------|----------|----------|----------|---------------------------|--------|
|                        |          |          |          | #                         | %      |
| Population 15+         | 32,400   | 32,500   | 32,000   | 400                       | 1.3    |
| Labour force           | 23,400   | 23,700   | 24,100   | (700)                     | (2.9)  |
| Employment             | 21,800   | 22,100   | 21,700   | 100                       | 0.5    |
| Full-time              | 19,200   | 19,300   | 18,600   | 600                       | 3.2    |
| Part-time              | 2,600    | 2,700    | 3,000    | (400)                     | (13.3) |
| Unemployment           | 1,600    | 1,600    | 2,400    | (800)                     | (33.3) |
| Participation rate (%) | 72.2     | 72.9     | 75.3     |                           |        |
| Unemployment rate (%)  | 6.8      | 6.8      | 10.0     |                           |        |
| Employment rate (%)    | 67.3     | 68.0     | 67.8     |                           |        |

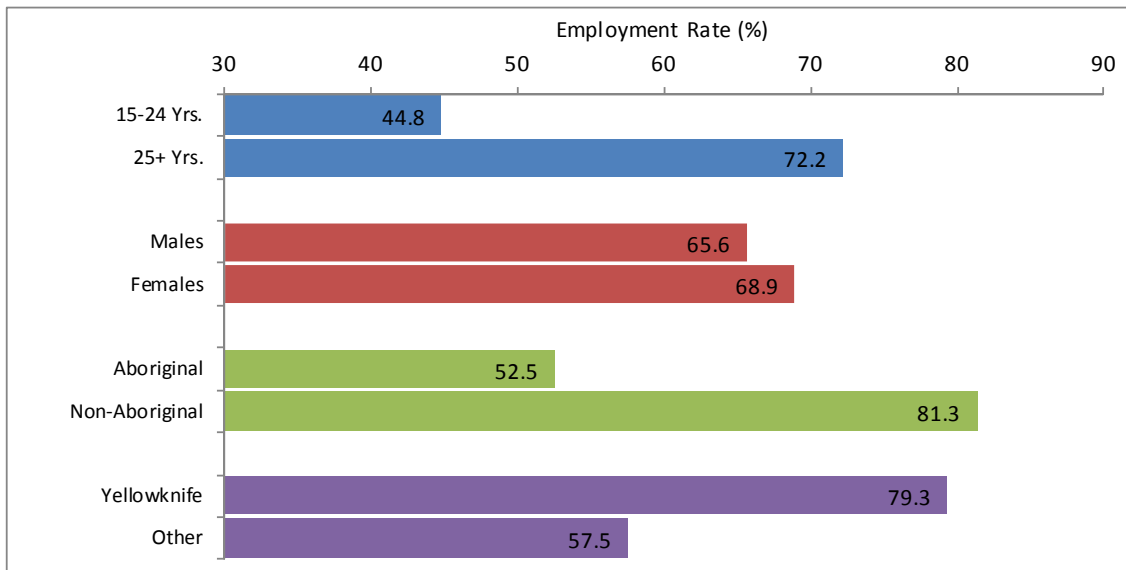
Figure 1: Employment Rates, NWT 2012 - 2016



## Employment by key characteristics

Employment rates for most key characteristics declined in December 2016 compared to December 2015. The exception was Non-Aboriginal persons (+2.1) and those living in Yellowknife (+1.5). The increase in the employment rate for Non-Aboriginals further widens the gap with Aboriginal persons whose employment rate declined by 2.8 percentage points to 52.5% in December 2016.

Figure 2: Employment rates by key characteristics, Dec 2016

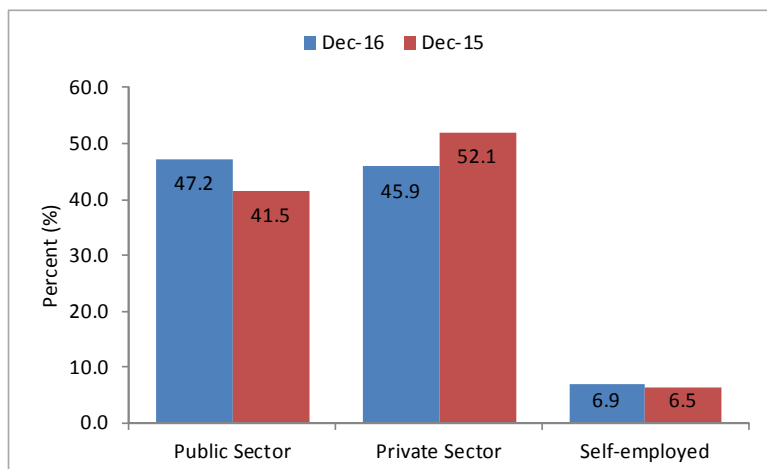


## Employment by industry & class of worker

Compared to December 2015, the proportion of persons in private sector employment decreased 6.2 percentage points to 45.9%. During the same time period, the proportion employed in the public sector and in self-employment increased by 5.8 and 0.4 percentage points respectively.

In December 2016, employment in the services-producing industry increased from 81.1% to 85.8% of total employment. The proportion employed in the goods-producing industry decreased to 14.2% of total employment.

Figure 3: Percentage Employment by Class of Worker, Dec 2015 & 2016



## Historical labour force activity

Table 2: Labour Force Activity -Northwest Territories

|                 | Population<br>15 & Over | Labour<br>Force | Employed | Unem-<br>ployed | Not in the<br>Labour<br>Force | Partic-<br>ipation<br>Rate | Unemp-<br>loyment<br>Rate | Employ-<br>ment<br>Rate |
|-----------------|-------------------------|-----------------|----------|-----------------|-------------------------------|----------------------------|---------------------------|-------------------------|
| Dec-16          | 32,400                  | 23,400          | 21,800   | 1,600           | 9,000                         | 72.2                       | 6.8                       | 67.3                    |
| Nov-16          | 32,500                  | 23,700          | 22,100   | 1,600           | 8,800                         | 72.9                       | 6.8                       | 68.0                    |
| Oct-16          | 32,600                  | 24,400          | 22,700   | 1,700           | 8,200                         | 74.8                       | 7.0                       | 69.6                    |
| Sep-16          | 32,600                  | 24,500          | 22,900   | 1,600           | 8,100                         | 75.2                       | 6.5                       | 70.2                    |
| Aug-16          | 32,700                  | 25,300          | 23,400   | 1,900           | 7,400                         | 77.4                       | 7.5                       | 71.6                    |
| Jul-16          | 32,600                  | 25,100          | 23,100   | 2,100           | 7,500                         | 77.0                       | 8.4                       | 70.9                    |
| Jun-16          | 32,600                  | 24,900          | 22,900   | 2,000           | 7,600                         | 76.4                       | 8.0                       | 70.2                    |
| May-16          | 32,500                  | 24,600          | 22,900   | 1,700           | 7,900                         | 75.7                       | 6.9                       | 70.5                    |
| Apr-16          | 32,400                  | 24,100          | 22,500   | 1,600           | 8,200                         | 74.4                       | 6.6                       | 69.4                    |
| Mar-16          | 32,300                  | 24,200          | 22,400   | 1,800           | 8,000                         | 74.9                       | 7.4                       | 69.3                    |
| Feb-16          | 32,200                  | 24,400          | 22,300   | 2,100           | 7,800                         | 75.8                       | 8.6                       | 69.3                    |
| Jan-16          | 32,100                  | 24,400          | 22,100   | 2,300           | 7,600                         | 76.0                       | 9.4                       | 68.8                    |
| Previous Years: |                         |                 |          |                 |                               |                            |                           |                         |
| Dec-15          | 32,000                  | 24,100          | 21,700   | 2,400           | 7,900                         | 75.3                       | 10.0                      | 67.8                    |
| Dec-14          | 32,300                  | 23,300          | 21,600   | 1,700           | 9,000                         | 72.1                       | 7.3                       | 66.9                    |
| Dec-13          | 32,600                  | 25,000          | 23,000   | 2,000           | 7,600                         | 76.7                       | 8.0                       | 70.6                    |
| Dec-12          | 32,500                  | 24,900          | 23,000   | 1,800           | 7,700                         | 76.6                       | 7.2                       | 70.8                    |
| Dec-11          | 32,300                  | 24,300          | 22,400   | 1,900           | 8,000                         | 75.2                       | 7.8                       | 69.3                    |
| Dec-10          | 32,100                  | 23,600          | 21,800   | 1,800           | 8,500                         | 73.5                       | 7.6                       | 67.9                    |
| Dec-09          | 31,700                  | 21,800          | 20,500   | 1,300           | 9,900                         | 68.8                       | 6.0                       | 64.7                    |
| Dec-08          | 31,700                  | 23,200          | 22,000   | 1,200           | 8,500                         | 73.2                       | 5.2                       | 69.4                    |
| Dec-07          | 31,700                  | 24,000          | 22,600   | 1,400           | 7,700                         | 75.7                       | 5.8                       | 71.3                    |
| Dec-06          | 31,300                  | 24,200          | 22,700   | 1,500           | 7,100                         | 77.3                       | 6.2                       | 72.5                    |

Information on the territorial labour market is a result of the extension of Statistics Canada's national labour force survey (LFS) to the Northwest Territories. Data presented for the Northwest Territories is based on three-month moving averages, with survey counts rounded to the nearest 100 persons.

For additional information on the monthly release of labour force survey results for the Northwest Territories, visit the NWT Bureau of Statistics website at <http://www.statsnwt.ca/> or call (867) 767-9169.

*Next Release: February 10, 2017*