

NWT Labour Force Activity

February 2016

OVERVIEW

In February 2016, Statistics Canada estimated that 22,300 persons were employed in the Northwest Territories. This represents an employment rate of 69.3% which was the highest in Canada followed by Yukon and Alberta. Nationally, Canada's employment rate was 60.3%.

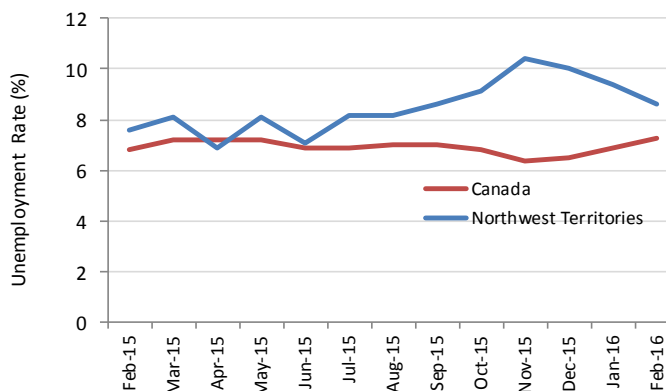
The NWT employment rose for the third consecutive month, increasing the number of employed persons by 600 between December 2015 and February 2016. Since February 2015, employment increased by 2.3% or 500 persons.

Table 1: Labour Force Statistics - Northwest Territories

	Feb-2016	Jan-2016	Feb-2015	Change from Feb 2015 – Feb 2016	
				Number	%
Population 15+	32,200	32,100	32,200	-	0.0
Labour force	24,400	24,400	23,600	800	3.4
Employment	22,300	22,100	21,800	500	2.3
Full-time	19,300	18,800	19,600	(300)	-1.5
Part-time	3,000	3,300	2,200	800	36.4
Unemployment	2,100	2,300	1,800	300	16.7
Participation rate (%)	75.8	76.0	73.3		
Unemployment rate (%)	8.6	9.4	7.6		
Employment rate (%)	69.3	68.8	67.7		

At 8.6%, unemployment in the NWT remained higher than the national level (7.3%) but continued to decline for three consecutive months. There were 300 more unemployed persons in in February 2016 compared to the same time last year.

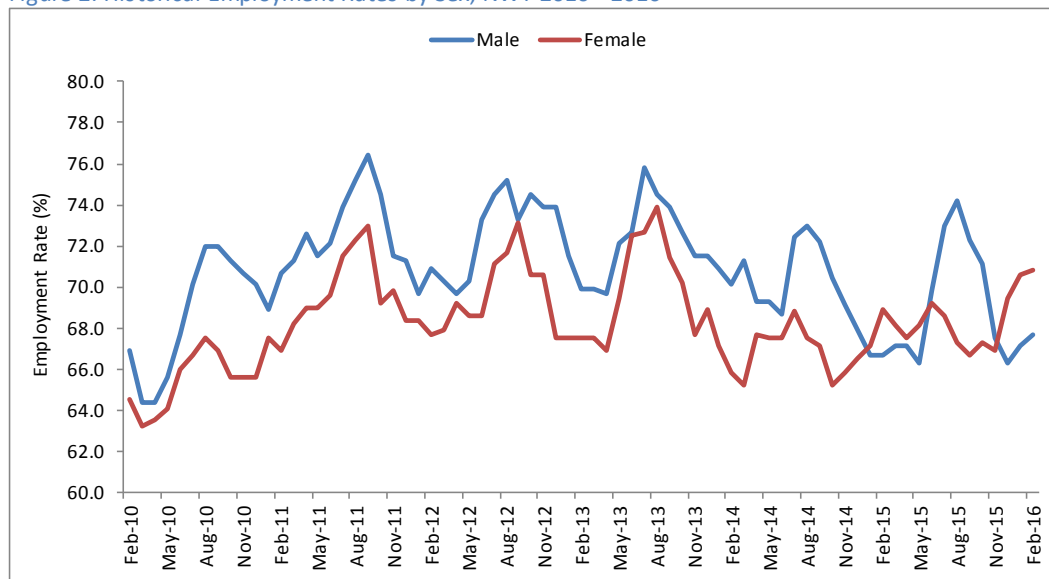
Figure 1: Unemployment rates during past 12 months, Northwest Territories & Canada



EMPLOYMENT RATES BY KEY DEMOGRAPHIC CHARACTERISTICS

Between January and February 2016, the employment rate for youth aged 15 to 24 decreased by 200 persons compared to increase of 400 persons among those aged 25 and over. The employment also increased by 400 persons among non-Aboriginals. The employment rate for females was higher than for males for three months in a row. Regionally, all job gains were outside of Yellowknife. Figure 2 provides historical employment rates by sex.

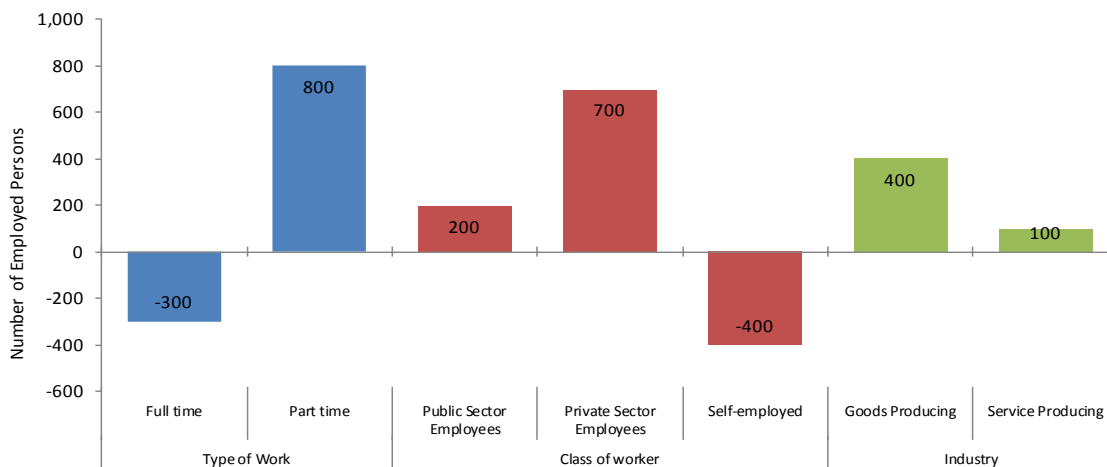
Figure 2: Historical Employment Rates by Sex, NWT 2010 - 2016



EMPLOYMENT BY TYPE OF WORKER, CLASS OF WORKER & INDUSTRY

Compared to February 2015, part-time employment gained 800 jobs, while full-time employment lost 300 jobs. Most of the job gains were in the private sector, increasing by 700 jobs compared to 200 in the public sector. Self-employment decreased by 400 persons. Goods Producing increased by 400 jobs and Service Producing by 100 jobs.

Figure 2: Changes in the number of employed persons from previous year



HISTORICAL LABOUR FORCE ACTIVITY

Table 2: Labour Force Activity - Northwest Territories

	Population 15 & Over	Labour Force	Employed	Unem- ployed	Not in the Labour Force	Partic- ipation Rate	Unemp- loyment Rate	Employ- ment Rate
Feb-16	32,200	24,400	22,300	2,100	7,800	75.8	8.6	69.3
Jan-16	32,100	24,400	22,100	2,300	7,600	76.0	9.4	68.8
Dec-15	32,000	24,100	21,700	2,400	7,900	75.3	10.0	67.8
Nov-15	31,900	24,000	21,500	2,500	8,000	75.2	10.4	67.4
Oct-15	31,900	24,100	21,900	2,200	7,700	75.5	9.1	68.7
Sep-15	31,800	24,300	22,200	2,100	7,500	76.4	8.6	69.8
Aug-15	31,800	24,500	22,500	2,000	7,300	77.0	8.2	70.8
Jul-15	31,800	24,500	22,500	2,000	7,300	77.0	8.2	70.8
Jun-15	31,900	23,800	22,200	1,700	8,000	74.6	7.1	69.6
May-15	32,000	23,500	21,600	1,900	8,500	73.4	8.1	67.5
Apr-15	32,100	23,200	21,600	1,600	8,800	72.3	6.9	67.3
Mar-15	32,200	23,600	21,700	1,900	8,500	73.3	8.1	67.4
Previous Years:								
Feb-15	32,200	23,600	21,800	1,800	8,600	73.3	7.6	67.7
Feb-14	32,500	24,000	22,100	1,900	8,600	73.8	7.9	68.0
Feb-13	32,600	24,000	22,400	1,600	8,600	73.6	6.7	68.7
Feb-12	32,300	24,500	22,400	2,100	7,800	75.9	8.6	69.3
Feb-11	32,100	23,900	22,200	1,800	8,200	74.5	7.5	69.2
Feb-10	31,800	22,200	20,900	1,300	9,600	69.8	5.9	65.7
Feb-09	31,700	22,500	21,800	700	9,200	71.0	3.1	68.8
Feb-08	31,800	23,900	22,400	1,500	7,800	75.2	6.3	70.4
Feb-07	31,300	24,500	23,500	1,000	6,900	78.3	4.1	75.1
Feb-06	31,200	24,000	22,800	1,200	7,200	76.9	5.0	73.1

Information on the territorial labour market is a result of the extension of Statistics Canada's national Labour Force Survey (LFS) to the Northwest Territories. Data presented for the Northwest Territories is based on three-month moving averages, with survey counts rounded to the nearest 100 persons.

For additional information on the monthly release of labour force survey results for the Northwest Territories, visit the NWT Bureau of Statistics website at <http://www.statsnwt.ca/> or call 1-888-782-8768 (1-888-STATSNT).

Next Release: April 8, 2016