

NWT Labour Force Activity

Released: December 2, 2016

www.statsnwt.ca

November 2016

Overview

Statistics Canada estimates that in November 2016, 22,100 persons were employed in the Northwest Territories, representing an employment rate of 68.0%. Canada's employment rate was 61.4%, with Yukon (72.9%) having the highest employment rate, followed by the Northwest Territories (68.0%), Alberta (66.7%), and Saskatchewan (65.4%).

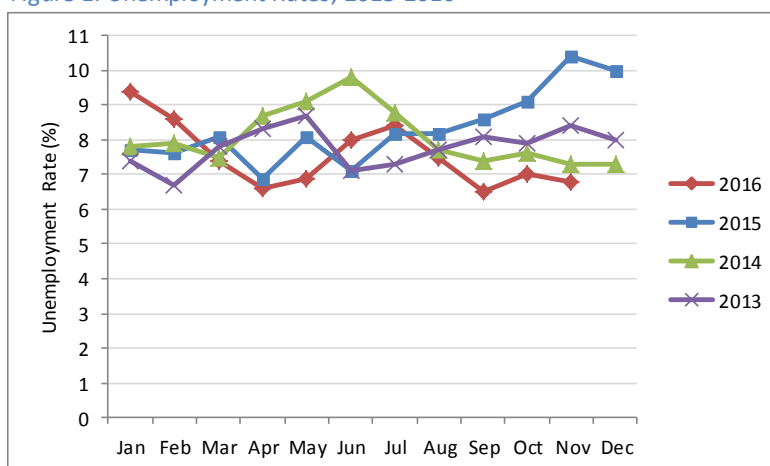
The employment rate in the Northwest Territories decreased for the third consecutive month reflecting historic seasonal employment patterns. The year-over-year employment rate was virtually unchanged, but 600 more people were employed compared to November 2015.

In the 12 months to November, the unemployment rate fell from 10.4% to 6.8%. Since September 2016, monthly unemployment rates were consistently lower than in the previous three years (Figure 1).

Table 1: Labour Force Statistics - Northwest Territories

	Nov-2016	Oct-2016	Nov-2015	Change from 12 months ago	
				#	%
Population 15+	32,500	32,600	31,900	600	1.9
Labour force	23,700	24,400	24,000	(300)	(1.3)
Employment	22,100	22,700	21,500	600	2.8
Full-time	19,300	20,100	18,700	600	3.2
Part-time	2,700	2,500	2,700	-	-
Unemployment	1,600	1,700	2,500	(900)	(36.0)
Participation rate (%)	72.9	74.8	75.2		
Unemployment rate (%)	6.8	7.0	10.4		
Employment rate (%)	68.0	69.6	67.4		

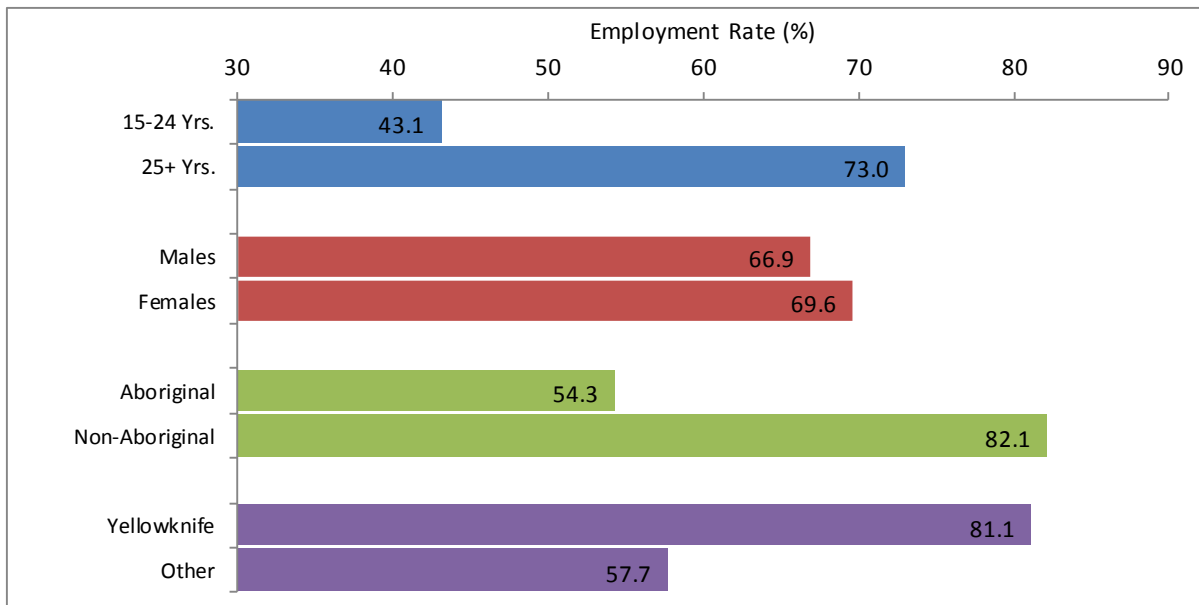
Figure 1: Unemployment Rates, 2013-2016



Employment by key characteristics

The employment rate for youths aged 15-24 dropped 2.7 percentage points from last year compared to a 0.7 percentage point increase among those aged 25 and over. Similarly, the employment rate for females and Non-Aboriginal persons increased by 2.7 and 3.7 percentage points respectively, while decreasing for males (0.6) and Aboriginal persons (0.4). Regionally, the employment rate increased by 3.5 percentage points in Yellowknife and by 0.6 percentage points for the rest of the territory.

Figure 2: Employment rates by key characteristics, Nov 2016

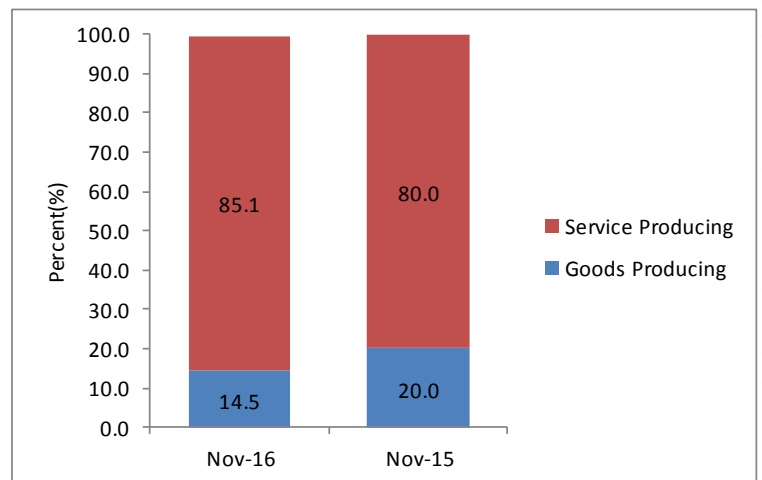


Employment by industry & class of worker

In November 2016, 14.5% of the employment was in the goods-producing industry, down from 20.0% in 2015. Employment in the services-producing industry increased from 80.0% to 85.1% in 2016.

In the 12 months to November, the proportion of persons in private sector employment decreased 6.6 percentage points to 46.2%. The proportion employed in the public sector and self-employment increased during the same time period (Figure 3).

Figure 3: Employment (%) by Industry, Nov 2016 & Nov 2015



Historical labour force activity

Table 2: Labour Force Activity -Northwest Territories

	Population 15 & Over	Labour Force	Employed	Unem- ployed	Not in the Labour Force	Partic- ipation Rate	Unemp- loyment Rate	Employ- ment Rate
Nov-16	32,500	23,700	22,100	1,600	8,800	72.9	6.8	68.0
Oct-16	32,600	24,400	22,700	1,700	8,200	74.8	7.0	69.6
Sep-16	32,600	24,500	22,900	1,600	8,100	75.2	6.5	70.2
Aug-16	32,700	25,300	23,400	1,900	7,400	77.4	7.5	71.6
Jul-16	32,600	25,100	23,100	2,100	7,500	77.0	8.4	70.9
Jun-16	32,600	24,900	22,900	2,000	7,600	76.4	8.0	70.2
May-16	32,500	24,600	22,900	1,700	7,900	75.7	6.9	70.5
Apr-16	32,400	24,100	22,500	1,600	8,200	74.4	6.6	69.4
Mar-16	32,300	24,200	22,400	1,800	8,000	74.9	7.4	69.3
Feb-16	32,200	24,400	22,300	2,100	7,800	75.8	8.6	69.3
Jan-16	32,100	24,400	22,100	2,300	7,600	76.0	9.4	68.8
Dec-15	32,000	24,100	21,700	2,400	7,900	75.3	10.0	67.8
Previous Years:								
Nov-15	31,900	24,000	21,500	2,500	8,000	75.2	10.4	67.4
Nov-14	32,300	23,400	21,800	1,700	8,900	72.4	7.3	67.5
Nov-13	32,600	24,900	22,800	2,100	7,600	76.4	8.4	69.9
Nov-12	32,500	25,200	23,500	1,700	7,400	77.5	6.7	72.3
Nov-11	32,300	24,600	22,900	1,700	7,700	76.2	6.9	70.9
Nov-10	32,100	23,200	22,000	1,200	8,900	72.3	5.2	68.5
Nov-09	31,700	21,800	20,300	1,500	9,900	68.8	6.9	64.0
Nov-08	31,700	24,000	22,600	1,400	7,800	75.7	5.8	71.3
Nov-07	31,700	24,400	22,900	1,500	7,200	77.0	6.1	72.2
Nov-06	31,300	24,200	22,900	1,300	7,100	77.3	5.4	73.2

Information on the territorial labour market is a result of the extension of Statistics Canada's national labour force survey (LFS) to the Northwest Territories. Data presented for the Northwest Territories is based on three-month moving averages, with survey counts rounded to the nearest 100 persons.

For additional information on the monthly release of labour force survey results for the Northwest Territories, visit the NWT Bureau of Statistics website at <http://www.statsnwt.ca/> or call (867) 767-9169.

Next Release: January 6, 2017