

Monthly Labour Force Activity – February 2017-

Overview

Information released today by Statistics Canada indicates that employment in the Northwest Territories was unchanged from last month. Out of 32,300 residents 15 years of age and older, 21,100 were employed. Of these, 86.3% worked full-time while 13.7% worked part-time, similar to the previous month.

Year over year, there were 1,200 fewer people employed in the NWT compared to February 2016.

The employment rate in February 2017 increased slightly to 65.3% ending the seasonal decline during the winter months. The seasonal decline in the employment rate this term was more prolonged and pronounced culminating in the record lowest employment rate for the month of February.

Table 1: Labour Force Statistics - Northwest Territories

	Feb-2017	Jan-2017	Feb-2016	Change from 12 months ago	
				#	%
Population 15+	32,300	32,400	32,200	100	0.3
Labour force	22,800	22,700	24,400	(1,600)	(6.6)
Employment	21,100	21,100	22,300	(1,200)	(5.4)
Full-time	18,200	18,300	19,300	(1,100)	(5.7)
Part-time	2,900	2,800	3,000	(100)	(3.3)
Unemployment	1,600	1,600	2,100	(500)	(23.8)
Participation rate (%)	70.6	70.1	75.8		
Unemployment rate (%)	7.0	7.0	8.6		
Employment rate (%)	65.3	65.1	69.3		

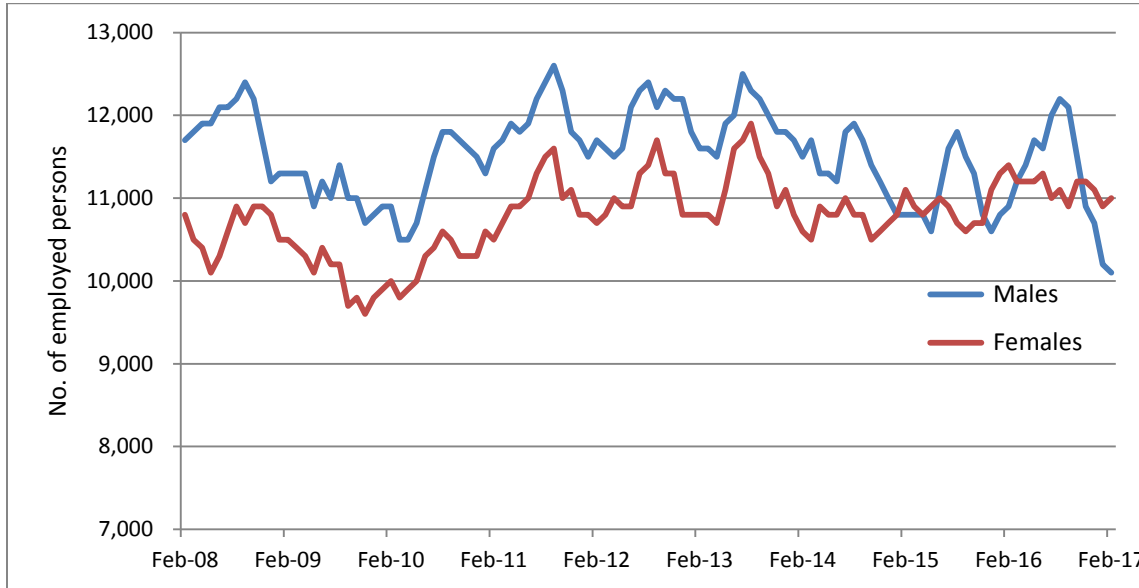
Nationally, Canada's employment rate was 60.6%. The NWT's employment rate was the third highest, after Yukon (72.9%) and Alberta (65.9%). On the other hand, the NWT unemployment rate was the seventh highest in the country at 7.0%. Newfoundland and Labrador (16.2%) and Nunavut (12.5%) had the highest unemployment rates.

Employment by key characteristics

Compared to the previous month, the employment rate slightly increased for females, Aboriginal persons, and for people living outside Yellowknife. On the other hand, compared to 12 months ago, the employment rate dropped by at least 2.3 percentage points for all key characteristics.

For the first time since 2001, when NWT labour force data collection started, the number of employed females topped that of males for four consecutive months to February 2017. The previous longest stretch lasted three months.

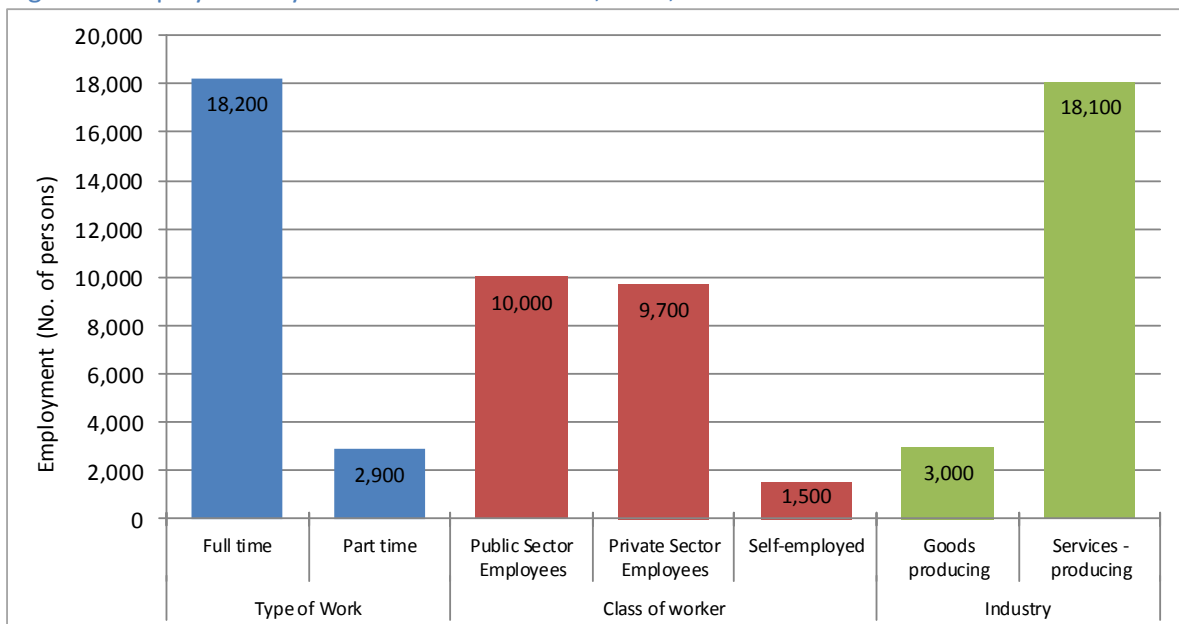
Figure 1: Historical employment by sex, NWT, February 2008 to February 2017



Employment by industry

Year-over-year employment gains in the public sector (+500) and in self-employment (+300) were offset by a 1,900 decline in private sector employment.

Figure 2: Employment by selected characteristics, NWT, Feb 2017



Historical labour force activity

Table 2: Labour Force Activity -Northwest Territories

	Population 15 & Over	Labour Force	Employed	Unem- ployed	Not in the Labour Force	Partic- ipation Rate	Unemp- loyment Rate	Employ- ment Rate
Feb-17	32,300	22,800	21,100	1,600	9,600	70.6	7.0	65.3
Jan-17	32,400	22,700	21,100	1,600	9,600	70.1	7.0	65.1
Dec-16	32,400	23,400	21,800	1,600	9,000	72.2	6.8	67.3
Nov-16	32,500	23,700	22,100	1,600	8,800	72.9	6.8	68.0
Oct-16	32,600	24,400	22,700	1,700	8,200	74.8	7.0	69.6
Sep-16	32,600	24,500	22,900	1,600	8,100	75.2	6.5	70.2
Aug-16	32,700	25,300	23,400	1,900	7,400	77.4	7.5	71.6
Jul-16	32,600	25,100	23,100	2,100	7,500	77.0	8.4	70.9
Jun-16	32,600	24,900	22,900	2,000	7,600	76.4	8.0	70.2
May-16	32,500	24,600	22,900	1,700	7,900	75.7	6.9	70.5
Apr-16	32,400	24,100	22,500	1,600	8,200	74.4	6.6	69.4
Mar-16	32,300	24,200	22,400	1,800	8,000	74.9	7.4	69.3
Previous Years:								
Feb-16	32,200	24,400	22,300	2,100	7,800	75.8	8.6	69.3
Feb-15	32,200	23,600	21,800	1,800	8,600	73.3	7.6	67.7
Feb-14	32,500	24,000	22,100	1,900	8,600	73.8	7.9	68.0
Feb-13	32,600	24,000	22,400	1,600	8,600	73.6	6.7	68.7
Feb-12	32,300	24,500	22,400	2,100	7,800	75.9	8.6	69.3
Feb-11	32,100	23,900	22,200	1,800	8,200	74.5	7.5	69.2
Feb-10	31,800	22,200	20,900	1,300	9,600	69.8	5.9	65.7
Feb-09	31,700	22,500	21,800	700	9,200	71.0	3.1	68.8
Feb-08	31,800	23,900	22,400	1,500	7,800	75.2	6.3	70.4
Feb-07	31,300	24,500	23,500	1,000	6,900	78.3	4.1	75.1

Information on the territorial labour market is a result of the extension of Statistics Canada's national labour force survey (LFS) to the Northwest Territories. Data presented for the Northwest Territories is based on three-month moving averages, with survey counts rounded to the nearest 100 persons.

For additional information on the monthly release of labour force survey results for the Northwest Territories, visit the NWT Bureau of Statistics website at <http://www.statsnwt.ca/> or call (867) 767-9169.

Next Release: April 7, 2017