

Released: September 7, 2018

## Labour Force Activity - August 2018-

### Overview

Statistics Canada estimates that in August 2018, out of 32,500 residents 15 years of age and older, 22,100 were employed in the Northwest Territories (NWT). Similar to the previous month, 88% of the employed worked full-time while 12% worked part-time. The employment rate was 68.0% in August, a 0.6 percentage point increase from the previous month.

On a year-over-year basis, the NWT labour force increased by 300 persons as more people looked for employment. Meanwhile, the unemployment rate was 6.8% in August 2018, down from 7.2% in July, and slightly above the 6.0% reported 12 months ago.

Table 1: Labour Force Statistics - Northwest Territories, August 2018

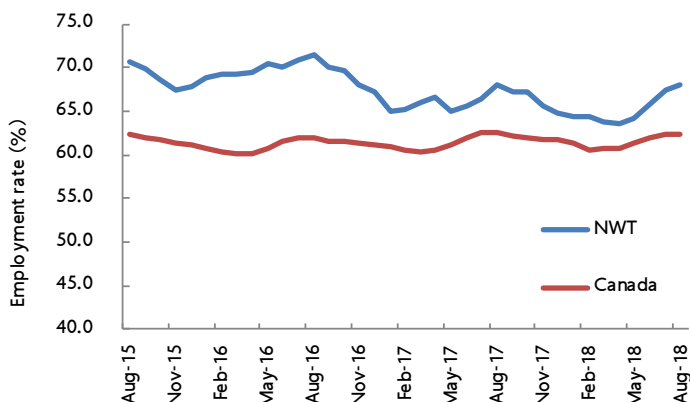
	Aug-18	Jul-18	Jun-18	Aug-17	Aug-16	Change from 12 months ago	
						Persons	%
<b>Population 15 &amp; over</b>	<b>32,500</b>	<b>32,500</b>	<b>32,500</b>	<b>32,300</b>	<b>32,700</b>	<b>200</b> ↑	0.6
Labour force	23,700	23,600	23,400	23,400	25,300	300 ↑	1.2
Employment	22,100	21,900	21,400	22,000	23,400	100 ↑	0.4
Unemployment	1,600	1,700	2,000	1,400	1,900	200 ↑	10.5
Not in labour force	8,700	8,900	9,100	9,000	7,400	(300) ↓	(4.1)
Participation rate (%)	72.9	72.6	72.0	72.4	77.4		
Unemployment rate (%)	6.8	7.2	8.5	6.0	7.5		
Employment rate (%)	68.0	67.4	65.8	68.1	71.6		

### National highlights

In August 2018, Canada's employment rate stood at 62.4%. Among the provinces and territories, Yukon had the highest employment rate at 74.9%, followed by the Northwest Territories (68.0%) and Alberta (67.7%).

In the past three years, Canada's employment rate has remained steady while the NWT rate has shown a downward trend.

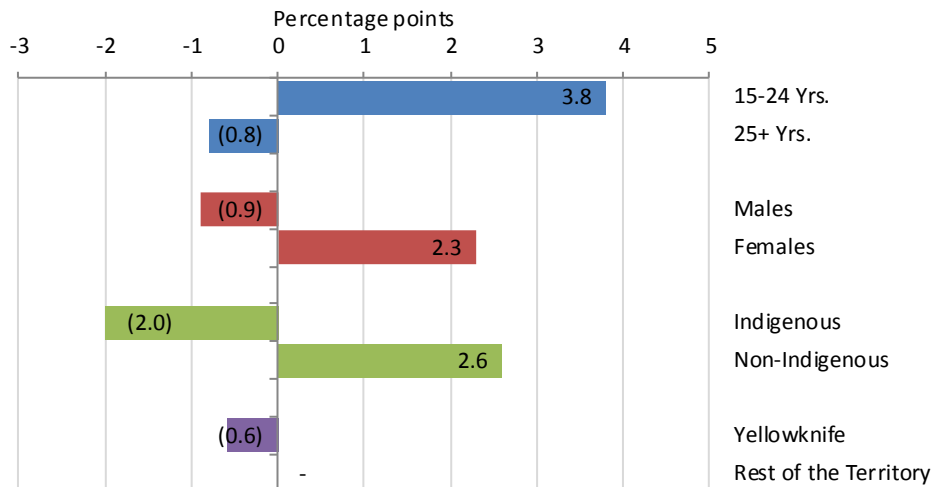
Figure 1: Employment Rates, NWT, 2015 - 2018



## Employment rates by key demographic characteristics

Compared to August 2017, employment rates by key demographic characteristics were mixed. Employment rates went up for youths aged 15-24 years, females, and Non-Indigenous persons. On the other hand, employment rates were down for persons 25 years and older, males, Indigenous persons, and those living in Yellowknife.

Figure 2: Year-over-year change in Employment Rates - NWT, August 2018



## Employment by employment type, class of worker, and industry

Employment increases in the public sector over the past 12 months were offset by declines in private sector employment and self-employment. Similarly, employment gains in the services industry were offset by a drop in the goods-producing industry.

Table 2: Monthly and Yearly Change in Employment by Selected Characteristics

	Aug-18	Jul-18	Aug-17	Change (persons) from	
				Jul-18	Aug-17
<b>Total Employment</b>	<b>22,100</b>	<b>21,900</b>	<b>22,000</b>	200	100
Full-time	19,500	19,300	19,400	200	100
Part-time	2,600	2,600	2,600	0	0
Employees	20,700	20,600	20,300	100	400
Public	10,300	10,300	9,100	0	1,200
Private	10,500	10,300	11,200	200	(700)
Self-employment	1,400	1,300	1,700	100	(300)
Goods-producing sector	3,600	3,500	4,200	100	(600)
Services-producing sector	18,500	18,400	17,800	100	700

## Historical labour force activity

The following table presents historical labour force activity in the Northwest Territories.

Table 3: Labour Force Activity -Northwest Territories

	Population 15 & Over	Labour Force	Employed	Unem- ployed	Not in the Labour Force	Partic- ipation Rate	Unemp- loyment Rate	Employ- ment Rate
Aug-18	32,500	23,700	22,100	1,600	8,700	72.9	6.8	68.0
Jul-18	32,500	23,600	21,900	1,700	8,900	72.6	7.2	67.4
Jun-18	32,500	23,400	21,400	2,000	9,100	72.0	8.5	65.8
May-18	32,500	22,700	20,900	1,900	9,800	69.8	8.4	64.3
Apr-18	32,500	22,500	20,700	1,800	10,000	69.2	8.0	63.7
Mar-18	32,400	22,700	20,700	2,000	9,700	70.1	8.8	63.9
Feb-18	32,400	22,800	20,900	1,900	9,600	70.4	8.3	64.5
Jan-18	32,400	22,900	20,900	2,000	9,500	70.7	8.7	64.5
Dec-17	32,400	22,600	21,000	1,600	9,900	69.8	7.1	64.8
Nov-17	32,400	22,800	21,300	1,500	9,600	70.4	6.6	65.7
Oct-17	32,400	23,400	21,800	1,500	9,000	72.2	6.4	67.3
Sep-17	32,300	23,300	21,700	1,600	9,000	72.1	6.9	67.2
Previous Years:								
Aug-17	32,300	23,400	22,000	1,400	9,000	72.4	6.0	68.1
Aug-16	32,700	25,300	23,400	1,900	7,400	77.4	7.5	71.6
Aug-15	31,800	24,500	22,500	2,000	7,300	77.0	8.2	70.8
Aug-14	32,300	24,600	22,700	1,900	7,700	76.2	7.7	70.3
Aug-13	32,600	26,100	24,200	2,000	6,400	80.1	7.7	74.2
Aug-12	32,500	26,100	23,800	2,300	6,300	80.3	8.8	73.2
Aug-11	32,400	26,100	23,900	2,200	6,300	80.6	8.4	73.8
Aug-10	32,100	24,200	22,300	1,900	7,900	75.4	7.9	69.5
Aug-09	31,800	23,100	21,500	1,600	8,600	72.6	6.9	67.6
Aug-08	31,800	24,600	23,100	1,400	7,200	77.4	5.7	72.6

Information on the territorial labour market is a result of the extension of Statistics Canada's national Labour Force Survey (LFS) to the Northwest Territories. Data presented for the Northwest Territories is based on three-month moving averages, with survey counts rounded to the nearest 100 persons.

For additional information on the monthly release of labour force survey results for the Northwest Territories, visit the NWT Bureau of Statistics website at <http://www.statsnwt.ca/> or call (867) 767-9169.

Next Release: October 5, 2018