

Monthly Labour Force Activity - December 2017-

Overview

In December 2017, there were 32,400 people in the Northwest Territories aged 15 years or older, 22,600, were either working or actively looking for work. Of this population, 21,000 were employed, which translates to an employment rate of 64.8%. Full-time employment accounted for 84.3% of those employed, with the remaining 15.7% working part-time.

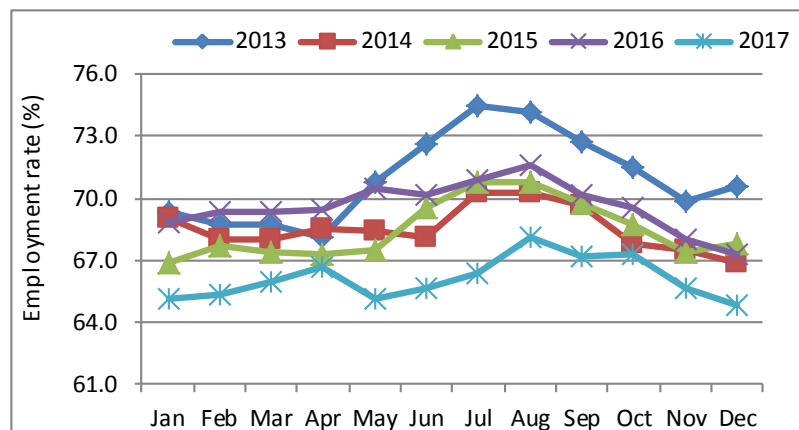
Compared to the previous month, employment dropped by 1.4% or by 300 persons, as part-time job gains were offset by losses in full-time employment. The unemployment rate rose 0.5 percentage points to 7.1%, the highest since August 2016.

Table 1: Labour Force Statistics - Northwest Territories, December 2017

	Dec-17	Nov-17	Dec-16	Change from 12 months ago	
				Number	%
Population 15 & over	32,400	32,400	32,400	-	-
Labour force	22,600	22,800	23,400	(800)	(3.4)
Employment	21,000	21,300	21,800	(800)	(3.7)
Full-time	17,700	18,000	19,200	(1,500)	(7.8)
Part-time	3,300	3,300	2,600	700	26.9
Unemployment	1,600	1,500	1,600	-	-
Not in labour force	9,900	9,600	9,000	900	10.0
Participation rate (%)	69.8	70.4	72.2		
Unemployment rate (%)	7.1	6.6	6.8		
Employment rate (%)	64.8	65.7	67.3		

Figure 1: Employment Rates, NWT 2013 - 2017

Figure 1 compares historical monthly employment rates. Throughout the year, employment rates were lower in 2017 compared to the previous 5 years.



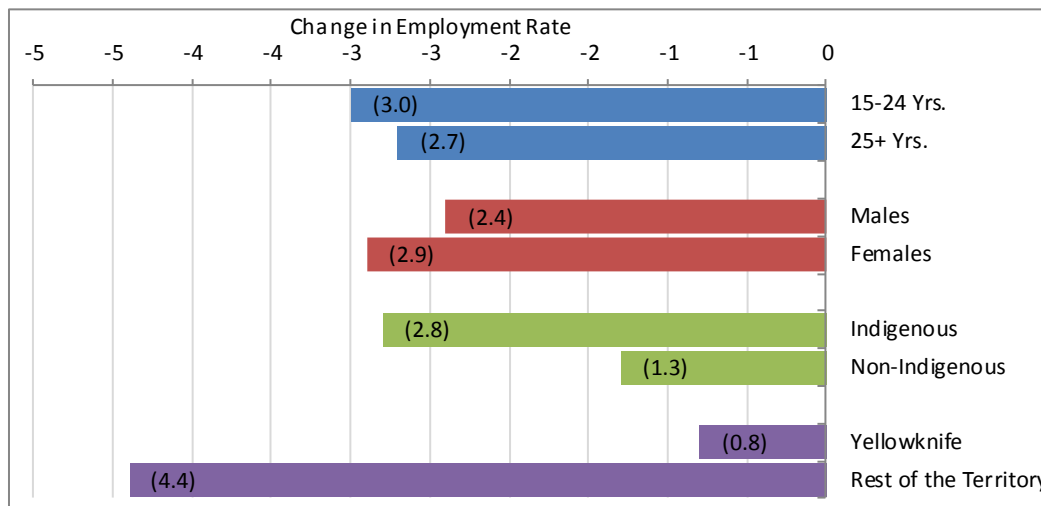
National highlights

Nationally, Canada's employment rate stood at 61.8% in December 2017. Among the provinces and territories, Yukon (71.4%) had the highest employment rate, followed by Alberta (66.8%), and the Northwest Territories (64.8%). Employment rates were lowest in Newfoundland & Labrador (50.4%), Nunavut (55.6%) and New Brunswick (56.6%).

Employment by key demographic characteristics

Year-over-year, employment rates dropped for all key demographic characteristics. Persons who live outside of Yellowknife and youths aged 15-24 years experienced the biggest drop in employment rates, 4.4 and 3.0 percentage points respectively.

Figure 2: Year-over-year percentage points change in Employment Rates - NWT, December 2017



Employment by employment type, class of worker, and industry

Increases in private sector employment and self-employment between December 2016 and December 2017 were off-set by a decline in public sector employment. Similarly, part-time employment increased by 700, while full-time employment dropped by 1,500.

During the same period, job losses occurred exclusively in the services-producing sector as employment levels remained unchanged in the goods-producing sector.

Table 2: Monthly and Yearly Change in Employment by Selected Characteristics

	Dec-17	Nov-17	Dec-16	Change (persons) from	
				Nov-17	Dec-16
Total Employment	21,000	21,300	21,800	(300)	(800)
Full-time	17,700	18,000	19,200	(300)	(1,500)
Part-time	3,300	3,300	2,600	-	700
Employees	19,300	19,600	20,300	(300)	(1,000)
Public	8,800	9,000	10,300	(200)	(1,500)
Private	10,500	10,700	10,000	(200)	500
Self-employment	1,700	1,700	1,500	-	200
Goods-producing sector	3,100	3,100	3,100	-	-
Services-producing sector	17,900	18,200	18,700	(300)	(800)

Historical labour force activity

The following table presents historical labour force activity in the Northwest Territories.

Table 3: Labour Force Activity -Northwest Territories

	Population 15 & Over	Labour Force	Employed	Unem- ployed	Not in the Labour Force	Partic- ipation Rate	Unemp- loyment Rate	Employ- ment Rate
Dec-17	32,400	22,600	21,000	1,600	9,900	69.8	7.1	64.8
Nov-17	32,400	22,800	21,300	1,500	9,600	70.4	6.6	65.7
Oct-17	32,400	23,400	21,800	1,500	9,000	72.2	6.4	67.3
Sep-17	32,300	23,300	21,700	1,600	9,000	72.1	6.9	67.2
Aug-17	32,300	23,400	22,000	1,400	9,000	72.4	6.0	68.1
Jul-17	32,400	23,000	21,500	1,500	9,300	71.0	6.5	66.4
Jun-17	32,400	22,700	21,300	1,400	9,700	70.1	6.2	65.7
May-17	32,400	22,400	21,100	1,400	9,900	69.1	6.3	65.1
Apr-17	32,400	22,800	21,600	1,200	9,600	70.4	5.3	66.7
Mar-17	32,400	22,900	21,400	1,600	9,400	70.7	7.0	66.0
Feb-17	32,300	22,800	21,100	1,600	9,600	70.6	7.0	65.3
Jan-17	32,400	22,700	21,100	1,600	9,600	70.1	7.0	65.1
Previous Years:								
Dec-16	32,400	23,400	21,800	1,600	9,000	72.2	6.8	67.3
Dec-15	32,000	24,100	21,700	2,400	7,900	75.3	10.0	67.8
Dec-14	32,300	23,300	21,600	1,700	9,000	72.1	7.3	66.9
Dec-13	32,600	25,000	23,000	2,000	7,600	76.7	8.0	70.6
Dec-12	32,500	24,900	23,000	1,800	7,700	76.6	7.2	70.8
Dec-11	32,300	24,300	22,400	1,900	8,000	75.2	7.8	69.3
Dec-10	32,100	23,600	21,800	1,800	8,500	73.5	7.6	67.9
Dec-09	31,700	21,800	20,500	1,300	9,900	68.8	6.0	64.7
Dec-08	31,700	23,200	22,000	1,200	8,500	73.2	5.2	69.4
Dec-07	31,700	24,000	22,600	1,400	7,700	75.7	5.8	71.3

Information on the territorial labour market is a result of the extension of Statistics Canada's national Labour Force Survey (LFS) to the Northwest Territories. Data presented for the Northwest Territories is based on three-month moving averages, with survey counts rounded to the nearest 100 persons.

For additional information on the monthly release of labour force survey results for the Northwest Territories, visit the NWT Bureau of Statistics website at <http://www.statsnwt.ca/> or call (867) 767-9169.

Next Release: February 9, 2018