

## Labour Force Activity

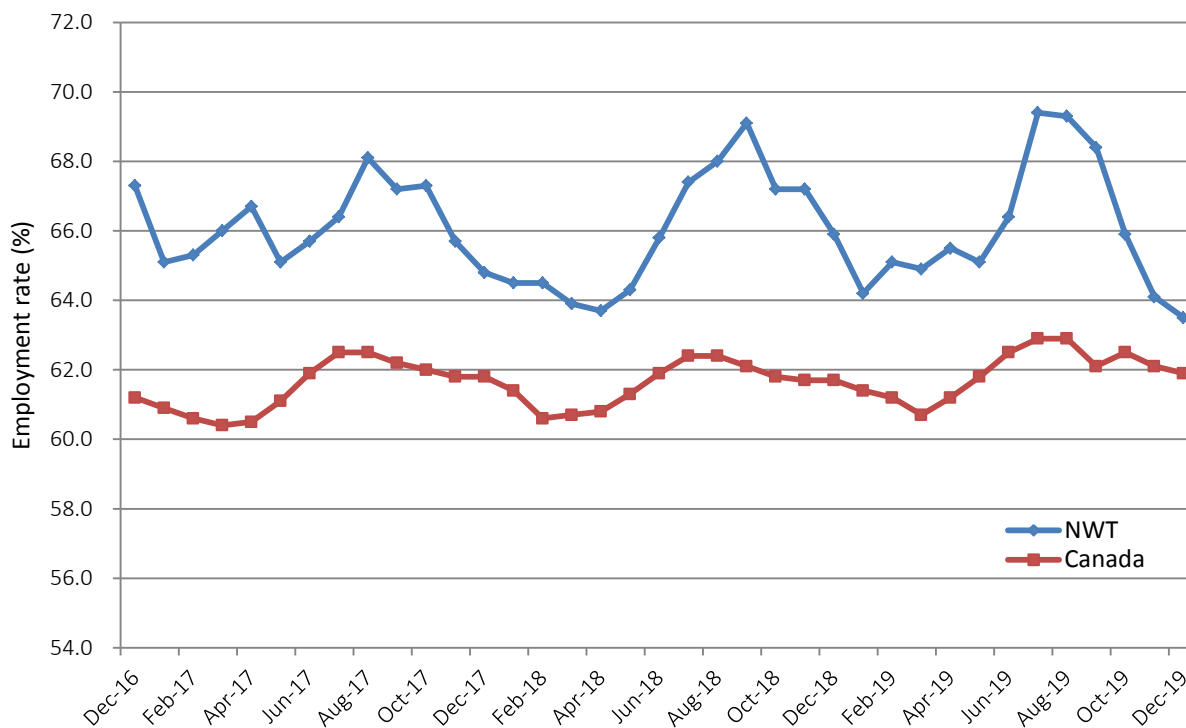
### December 2019

Statistics Canada estimates that in December 2019, 20,500 out of 32,300 residents 15 years of age and older were employed in the Northwest Territories. This translates to an employment rate of 63.5%, the lowest monthly rate for the Northwest Territories since collection started in 2001. Compared to November 2019, employment fell by 200 persons translating to an employment rate decline of 0.6 percentage points from the previous month.

Compared to December 2018, employment in the NWT decreased by 800 persons and the employment rate dropped 2.4 percentage points. Employment rates decreased among all key demographic characteristics, with the largest decline occurring among Indigenous persons falling by 3.9 percentage points to 47.1%. The December 2019 employment rate for both males and persons aged 25+ years of age saw a decline of 3.1 percentage points compared to one year ago.

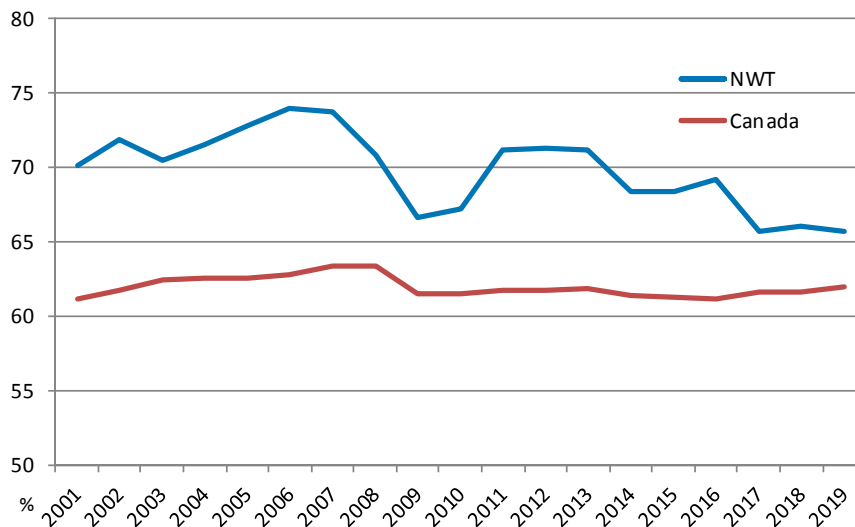
Figure 1 compares employment rates between Canada and the Northwest Territories over the past 36 months. While following similar seasonal fluctuations, monthly employment rates in the NWT were more volatile in 2019, ranging between 63.5% to 69.4%, compared with the 60.7% to 62.9 range for Canada.

Figure 1: Monthly Employment Rates, Northwest Territories & Canada, 2016 to 2019



# Year-End Review, 2019

Figure 2: Annual Employment Rates, 2001 - 2019



When looking at annual data also released today by Statistics Canada, The NWT employment rate declined from 66.0% to 65.7% between 2018 and 2019. Despite annual fluctuations, the NWT employment rate has trended downward over the last decade.

The NWT unemployment rate increased in 2019 to 8.2% from 7.3% in 2018.

## Employment by Industry

Most sectors saw little change in job growth between 2018 and 2019 with most either growing or declining by 100 persons. The exceptions were manufacturing (+200), information, culture & recreation (-300) and public administration (-200).

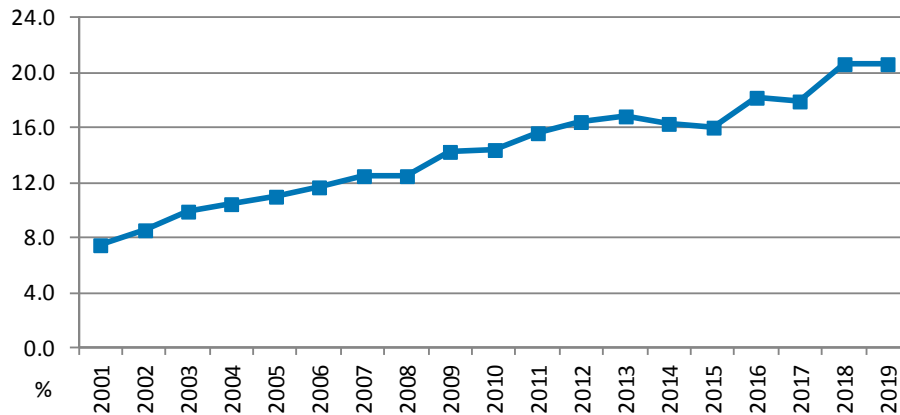
Table 1. Employment Changes for Selected Industries: NWT, 2018 & 2019

	2019		2018		Change from 2018	
	Persons	(%)	Persons	(%)	Persons	(% Growth)
<b>All Industries</b>	<b>21,300</b>	<b>100.0</b>	<b>21,400</b>	<b>100.0</b>	<b>(100)</b>	<b>(0.5)</b>
<b>Goods-producing sector</b>	<b>3,100</b>	<b>14.6</b>	<b>3,100</b>	<b>14.5</b>	-	-
Forestry, fishing, mining, oil and gas	1,300	6.1	1,400	6.5	(100)	(7.1)
Utilities	200	0.9	300	1.4	(100)	(33.3)
Construction	1,300	6.1	1,200	5.6	100	8.3
Manufacturing	200	0.9	-	-	200	n.a.
<b>Services-producing sector</b>	<b>18,200</b>	<b>85.4</b>	<b>18,400</b>	<b>86.0</b>	<b>(200)</b>	<b>(1.1)</b>
Trade	2,400	11.3	2,300	10.7	100	4.3
Transportation and warehousing	1,600	7.5	1,500	7.0	100	6.7
Finance, insurance, real estate and leasing	1,100	5.2	1,000	4.7	100	10.0
Professional, scientific and technical services	700	3.3	700	3.3	-	-
Business, building and other support services	400	1.9	300	1.4	100	33.3
Educational services	1,600	7.5	1,600	7.5	-	-
Health care and social assistance	2,600	12.2	2,700	12.6	(100)	(3.7)
Information, culture and recreation	1,100	5.2	1,400	6.5	(300)	(21.4)
Accommodation and food services	1,200	5.6	1,200	5.6	-	-
Other services	500	2.3	500	2.3	-	-
Public administration	4,900	23.0	5,100	23.8	(200)	(3.9)

## Employment Rates by Select Characteristics

The proportion of the workforce aged 55 years and over increased from 7.5% in 2001 to 20.7% in 2019 (Figure 3). Subsequently, the proportion among the other age groups declined over the same period.

Figure 3: Proportion of Employed Persons who are Aged 55+ Yrs: NWT, 2001 - 2019



Employment rates rose for 15 to 24 year olds between 2018 and 2019 rising by 3.7 percentage points while falling in the other age categories. Indigenous persons also saw a decline, falling to 48.3% in 2019.

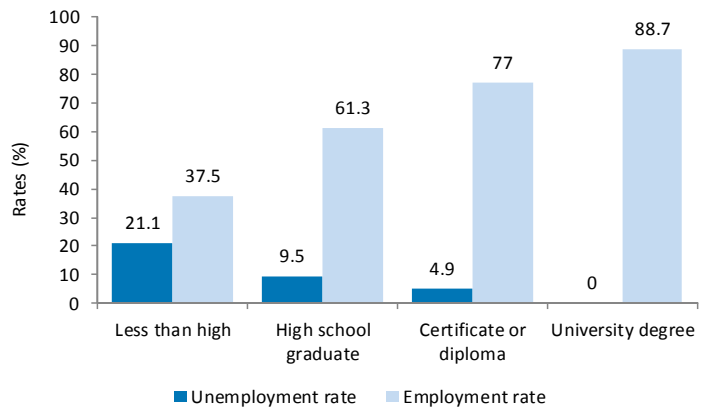
Table 2: Historical Employment Rates by Selected Characteristics, NWT 2010 - 2019

	2010	2011	2012	2013	2014	2015	2016	2017	2018	2019
<b>Northwest Territories</b>	<b>67.2</b>	<b>71.2</b>	<b>71.3</b>	<b>71.2</b>	<b>68.4</b>	<b>68.4</b>	<b>69.2</b>	<b>65.7</b>	<b>66.0</b>	<b>65.7</b>
Males	68.3	72.7	72.7	72.1	69.9	68.8	69.9	66.0	66.3	67.1
Females	65.4	69.6	69.8	69.6	66.5	68.1	68.5	66.0	65.8	64.4
15 – 24 yrs.	41.2	47.1	46.3	47.7	44.4	48.3	47.5	44.6	44.4	48.1
25 – 54 yrs.	80.3	83.5	83.5	83.0	81.7	83.9	82.5	80.3	78.6	77.3
55 + yrs.	52.5	59.0	60.3	58.2	51.4	47.9	53.2	47.5	53.0	51.2
Indigenous	51.3	55.2	55.6	54.9	51.7	55.3	56.1	51.6	50.6	48.3
Non-Indigenous	83.1	84.3	83.9	84.0	81.9	80.0	81.2	80.4	80.4	80.9
Yellowknife	80.1	80.9	81.6	82.0	79.2	79.7	79.3	77.7	78.1	77.2
Rest of territories	57.0	60.0	61.4	60.0	57.0	58.1	60.6	55.7	55.7	54.8
Less than high school	36.8	44.4	44.6	44.8	39.1	43.5	43.2	35.2	35.3	37.5
High school	76.9	74.0	72.5	70.2	71.7	67.9	69.8	65.3	63.2	61.3
Some-post-secondary	78.6	65.2	69.0	66.7	65.2	58.3	63.6	64.0	66.7	65.0
Certificate/diploma	85.2	86.6	83.8	83.5	82.0	81.4	82.1	80.9	79.8	77.0
University degree	90.4	92.6	89.8	88.5	86.9	86.9	89.6	88.6	90.5	88.7

## Employment Rates and Educational Attainment

Employment rates in the NWT demonstrate the strong association between educational attainment and employment. In 2019, the employment rate among persons with high school education was 61.3% compared to 37.5% for those with less than high school education. The unemployment rate for those with a university degree was negligible compared to over 20% for those with less than high school.

Figure 4: Employment & Unemployment Rates by Level of Schooling, NWT 2019



For additional information and detailed table on the labour force survey results for the Northwest Territories, visit the NWT Bureau of Statistics website at <http://www.statsnwt.ca/> or call (867) 767-9169.

Next Release: February 7, 2020