

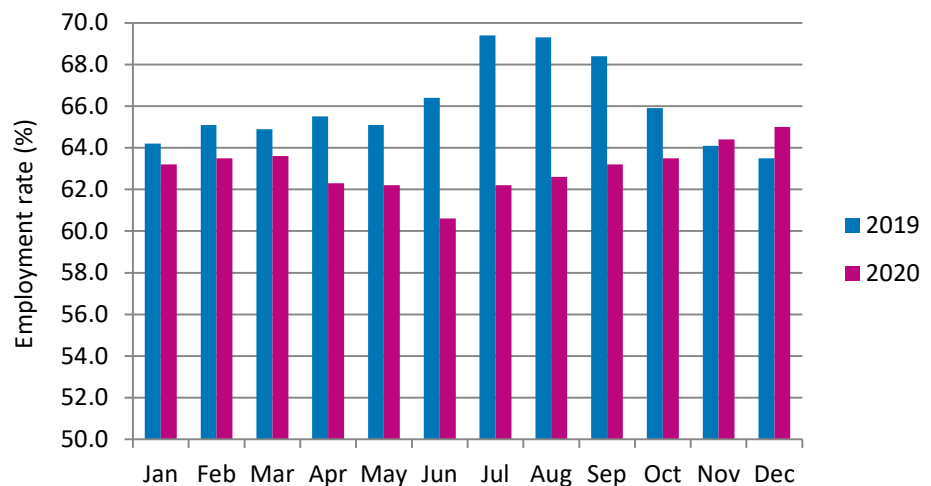
Labour Force Activity December 2020

Employment in the Northwest Territories increased to 21,200 in December. This represents an employment rate of 65.0%, the highest in 2020. Meanwhile, the unemployment rate declined by 0.5 percentage points to 6.2%.

Compared to December 2019, employment in the NWT increased by 700 persons and the employment rate was 1.5 percentage points higher. Year-over-year employment rates increased for most of the key demographic characteristics, increasing the most for Indigenous persons and for those living outside of Yellowknife, by 7.3 and 6.3 percentage points, respectively.

The NWT employment rate has steadily increased since June, coinciding with the relaxation of measures introduced to contain the coronavirus pandemic. Figure 1 compares employment rates for 2019 and 2020. The impact of the pandemic on the labour market is reflected by the divergence from historical trends seen in the NWT where employment rates typically rise during the summer months and decline in the fall. In 2020, May and June saw the lowest employment rates ever recorded for the NWT.

Figure 1: NWT Employment rates, 2019 & 2020



Nationally, the employment rate was 59.4%, a slight increase from the previous month. The Northwest Territories (65.0%) had the second highest employment rate after Yukon (66.4%). Saskatchewan (62.6) and Alberta (61.9%) had the third and fourth highest employment rates, respectively.

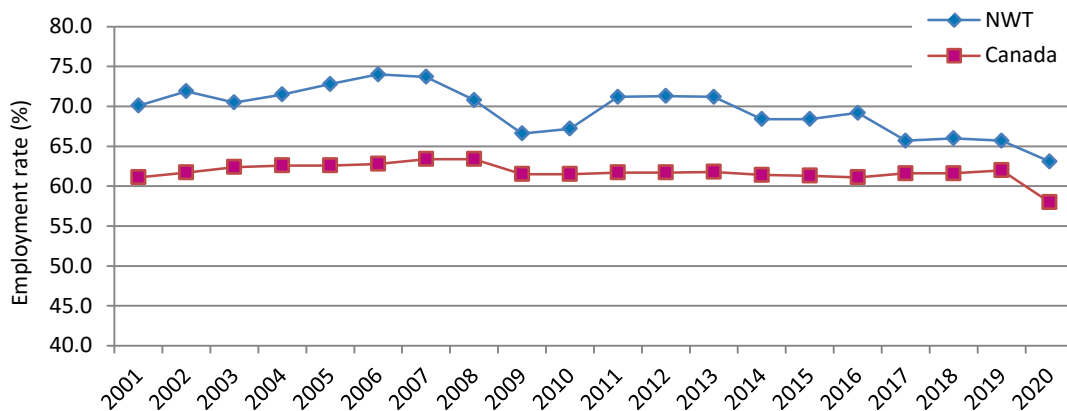


Year-End Review, 2020

The Labour Force Survey is a source of monthly estimates of labour market indicators. On a yearly basis, Statistics Canada combines monthly data to come up with detailed annual estimates. The rest of this report provides information on the annual estimates released today.

Employment in the Northwest Territories during 2020 declined by 800 persons to 20,500 compared to 2019. The coronavirus pandemic saw the employment rate falling 2.6 percentage points to 63.1%. In Canada, it led to the largest (-4.0) year-over-year percentage point drop in the employment rate during the past 20 years.

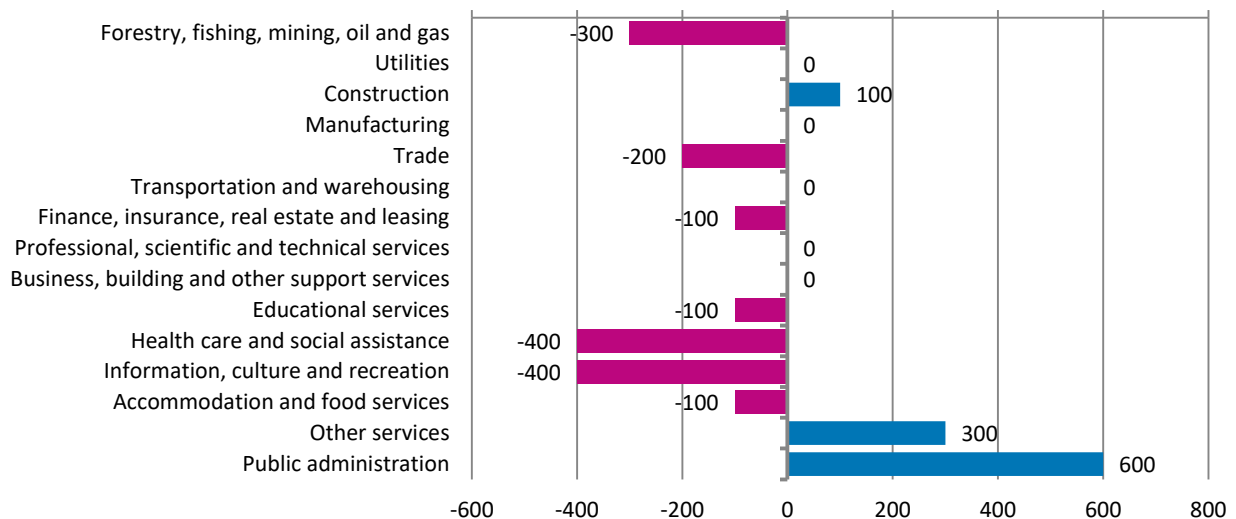
Figure 2: Annual employment rates, NWT & Canada



Employment by Industry

Compared to 2019, NWT employment declined in both the goods-producing and services-producing industries. Employment dropped the most in health care and social assistance, information, culture and recreation and in forestry, fishing, mining, oil and gas. Employment gains in public administration, other services and in construction were not able to offset job losses in the rest of industries.

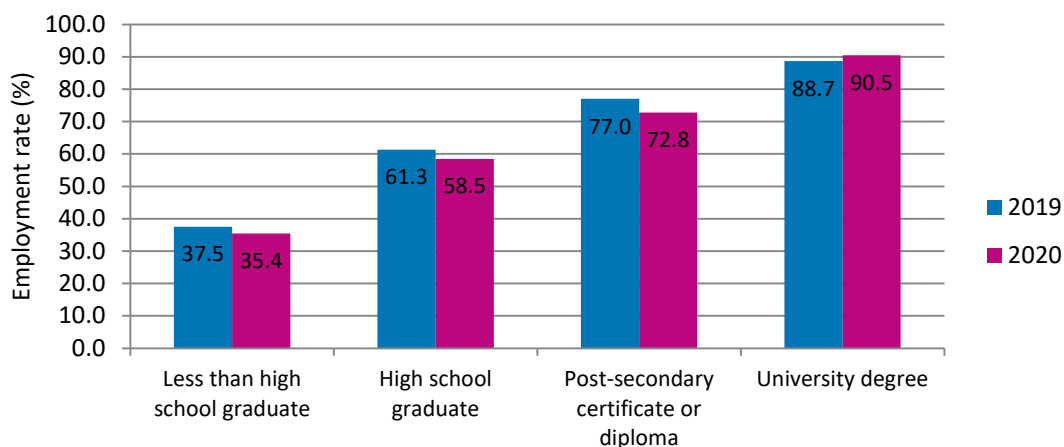
Figure 3. NWT Employment change by Industry, 2019 & 2020



Employment Rates and Educational Attainment

In 2020, employment rates ranged from 35.4% among those with less than high school education to 90.5% among those with a university degree. Employment rates in the NWT demonstrate the strong association between educational attainment and employment. Between 2019 and 2020, employment rates declined for persons in all educational attainment categories, except for those with a university degree.

Figure 4: NWT Employment rates by highest level of schooling, 2019 & 2020



Historical Annual Labour Force Activity

The following table presents historical annual labour force activity in the Northwest Territories.

Table 1: Labour Force Activity - Northwest Territories

	Number of persons					Percent		
	Pop. 15 & Over	Labour force	Employed Persons	Unemploy- ed	Not in Labour force	Participat- ion rate	Unemploy- ment rate	Employme- nt rate
2020	32,500	22,500	20,500	1,900	10,000	8.4	69.2	63.1
2019	32,400	23,100	21,300	1,900	9,200	8.2	71.3	65.7
2018	32,400	23,200	21,400	1,700	9,300	7.3	71.6	66.0
2017	32,400	22,900	21,300	1,500	9,500	6.6	70.7	65.7
2016	32,500	24,300	22,500	1,800	8,200	7.4	74.8	69.2
2015	32,000	24,000	21,900	2,000	8,000	8.3	75.0	68.4
2014	32,300	24,000	22,100	1,900	8,300	7.9	74.3	68.4
2013	32,600	25,100	23,200	2,000	7,500	8.0	77.0	71.2
2012	32,400	25,100	23,100	2,100	7,300	8.4	77.5	71.3
2011	32,300	24,800	23,000	1,800	7,500	7.3	76.8	71.2

For additional information and detailed tables on the labour force survey results for the Northwest Territories, visit the NWT Bureau of Statistics website at <http://www.statsnwt.ca/> or call (867) 767-9169.

Next Release: February 5, 2021