

Released: March 9, 2018

Monthly Labour Force Activity - February 2018-

Overview

In February 2018, there were 32,400 people aged 15 years or older in the Northwest Territories (NWT). Of these, 22,800 were working or actively looking for work representing a participation rate of 72.4%. The number of employed persons was unchanged from last month, at 20,900. Similarly the employment rate stood at 64.5%.

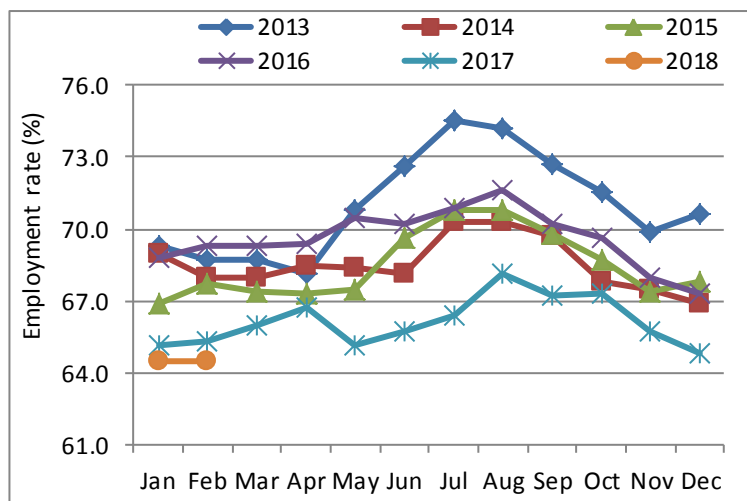
Table 1: Labour Force Statistics - Northwest Territories, February 2018

	Feb-18	Jan-18	Feb-17	Change from 12 months ago	
				Number	%
Population 15 & over	32,400	32,400	32,300	100	0.3
Labour force	22,800	22,900	22,800	-	-
Employment	20,900	20,900	21,100	(200)	(0.9)
Full-time	18,000	17,900	18,200	(200)	(1.1)
Part-time	2,900	3,000	2,900	-	-
Unemployment	1,900	2,000	1,600	300	18.8
Not in labour force	9,600	9,500	9,600	-	-
Participation rate (%)	70.4	70.7	70.6		
Unemployment rate (%)	8.3	8.7	7.0		
Employment rate (%)	64.5	64.5	65.3		

Figure 1 provides historical employment rates for the NWT. Since 2017, employment rates have stayed lower than in previous years, while conforming to seasonal patterns.

In February 2018, the employment rate was slightly lower than 12 months prior. At 64.5%, this was the lowest employment rate for February since 2001, when collection of employment data for the NWT commenced.

Figure 1: Employment Rates, NWT 2013 - 2018

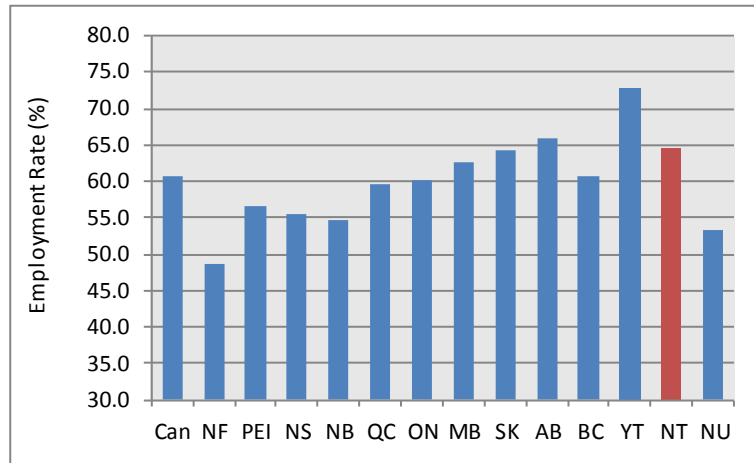


National highlights

Nationally, Canada's employment rate dropped slightly from the previous month to 60.6% in February 2018. The Northwest Territories had the third highest employment rate after Yukon (72.9%) and Alberta (65.9%).

At 8.3%, the NWT's unemployment rate was seventh highest in the country, with Newfoundland & Labrador (16.2%), Nunavut (14.3%) and Prince Edward Island (11.7%), having the highest unemployment rates.

Figure 2: Employment Rates, Provinces & Territories, February 2018



Employment by key demographic characteristics

Overall employment in the NWT dropped by 200 persons, year-over-year. However different patterns can be observed for each of the key demographic characteristics. Employment increased for Non-Indigenous persons and those living in Yellowknife, while declining for persons aged 25 years and over, Indigenous persons, and those residing outside of Yellowknife. On the other hand, employment was unchanged for youth aged 15-24 years.

Table 2: Employment & Employment Rates by Key Characteristics, NWT

	Feb-18		Jan-18		Feb-17		Change in persons from	
	Employment (Persons)	Rate (%)	Employment (Persons)	Rate (%)	Employment (Persons)	Rate (%)	1 Month ago	1 Year ago
Northwest Territories	20,900	64.5	20,900	64.5	21,100	65.3	0	(200)
15-24 Yrs.	2,300	41.8	2,300	41.8	2,300	40.4	0	0
25+ Yrs.	18,700	69.3	18,700	69.5	18,900	71.1	0	(200)
Males	10,000	61.3	10,000	61.3	10,100	62.3	0	(100)
Females	10,900	67.3	10,900	67.3	11,000	68.3	0	(100)
Indigenous	8,100	50.0	8,000	49.7	8,500	52.5	100	(400)
Non-Indigenous	12,900	79.6	13,000	79.8	12,700	78.4	(100)	200
Yellowknife	11,300	76.9	11,700	78.5	11,000	74.8	(400)	300
Rest of the Territory	9,600	53.9	9,200	52.6	10,100	57.1	400	(500)

Employment by employment type, class of worker, and industry

Compared to February 2017, employment in the private sector increased by 600, while decreasing in the public sector, and in self-employment by 700 and 200 persons, respectively.

Year-over-year, employment in the goods-producing sector stood at 3,000, while dropping slightly in the services-producing sector. Similarly the employment decline was concentrated in full-time employment as part-time employment was unchanged from February 2017.

Historical labour force activity

The following table presents historical labour force activity in the Northwest Territories.

Table 3: Labour Force Activity -Northwest Territories

	Population 15 & Over	Labour Force	Employed	Unem- ployed	Not in the Labour Force	Partic- ipation Rate	Unemp- loyment Rate	Employ- ment Rate
Feb-18	32,400	22,800	20,900	1,900	9,600	70.4	8.3	64.5
Jan-18	32,400	22,900	20,900	2,000	9,500	70.7	8.7	64.5
Dec-17	32,400	22,600	21,000	1,600	9,900	69.8	7.1	64.8
Nov-17	32,400	22,800	21,300	1,500	9,600	70.4	6.6	65.7
Oct-17	32,400	23,400	21,800	1,500	9,000	72.2	6.4	67.3
Sep-17	32,300	23,300	21,700	1,600	9,000	72.1	6.9	67.2
Aug-17	32,300	23,400	22,000	1,400	9,000	72.4	6.0	68.1
Jul-17	32,400	23,000	21,500	1,500	9,300	71.0	6.5	66.4
Jun-17	32,400	22,700	21,300	1,400	9,700	70.1	6.2	65.7
May-17	32,400	22,400	21,100	1,400	9,900	69.1	6.3	65.1
Apr-17	32,400	22,800	21,600	1,200	9,600	70.4	5.3	66.7
Mar-17	32,400	22,900	21,400	1,600	9,400	70.7	7.0	66.0
Previous Years:								
Feb-17	32,300	22,800	21,100	1,600	9,600	70.6	7.0	65.3
Feb-16	32,200	24,400	22,300	2,100	7,800	75.8	8.6	69.3
Feb-15	32,200	23,600	21,800	1,800	8,600	73.3	7.6	67.7
Feb-14	32,500	24,000	22,100	1,900	8,600	73.8	7.9	68.0
Feb-13	32,600	24,000	22,400	1,600	8,600	73.6	6.7	68.7
Feb-12	32,300	24,500	22,400	2,100	7,800	75.9	8.6	69.3
Feb-11	32,100	23,900	22,200	1,800	8,200	74.5	7.5	69.2
Feb-10	31,800	22,200	20,900	1,300	9,600	69.8	5.9	65.7
Feb-09	31,700	22,500	21,800	700	9,200	71.0	3.1	68.8
Feb-08	31,800	23,900	22,400	1,500	7,800	75.2	6.3	70.4

Information on the territorial labour market is a result of the extension of Statistics Canada's national Labour Force Survey (LFS) to the Northwest Territories. Data presented for the Northwest Territories is based on three-month moving averages, with survey counts rounded to the nearest 100 persons.

For additional information on the monthly release of labour force survey results for the Northwest Territories, visit the NWT Bureau of Statistics website at <http://www.statsnwt.ca/> or call (867) 767-9169.

Next Release: April 6, 2018