

Labour Force Activity

-February 2019-

Overview

Information released today by Statistics Canada indicates that employment in the Northwest Territories increased by 300 persons from last month. Out of 32,400 residents 15 years of age and older, 21,100 were employed. Of the employed, about 90% worked full-time while 10% worked part-time.

The employment rate in February 2019 increased slightly to 65.1% from the previous month, ending the seasonal drop during the winter months. In spite of the employment rate increase, this was the second lowest rate for February during the past 10 years.

On an annual basis, there were marginal gains in total employment, with a 200 person increase compared to February 2018. Among key demographic characteristics, employment improved among persons aged 25 years & over, those living in Yellowknife, males, and Non-Indigenous persons.

Employment rates increased the most among males and youth aged 15 to 24, while females and Indigenous persons saw the largest declines in the 12 months to February 2019.

Table 1: Employment & Employment Rates by Key Characteristics, NWT

	Feb-2019		Jan-2019		Feb-2018		Change from 1 Yr. Ago (p.p)
	(Persons)	Rate (%)	(Persons)	Rate (%)	(Persons)	Rate (%)	
Northwest Territories	21,100	65.1	20,800	64.2	20,900	64.5	0.6
15-24 Yrs.	2,300	43.4	2,200	41.5	2,300	41.8	1.6
25+ Yrs.	18,800	69.4	18,700	69.0	18,700	69.3	0.1
Males	10,700	65.2	10,700	65.6	10,000	61.3	3.9
Females	10,400	65.0	10,100	63.1	10,900	67.3	(2.3)
Indigenous	7,300	48.0	7,200	48.0	8,100	50.0	(2.0)
Non-Indigenous	13,700	79.7	13,700	78.7	12,900	79.6	0.1
Yellowknife	12,000	77.4	11,800	77.1	11,300	76.9	0.5
Rest of the Territory	9,100	53.5	9,000	52.9	9,600	53.9	(0.4)



Employment by employment type, class of worker, and industry

On a year-over-year basis, the number of full-time employees rose by 900, while the number of part-time employees dropped by 700.

Self-employment accounted for all annual increases as employment in the public and private sectors was unchanged from February 2018.

In the services-producing industries, overall employment increased by 200 after losses in sectors such as professional, scientific and technical services and educational services were off-set by gains in trade and accommodation & food services. Employment in the goods-producing industries was unchanged from 12 months earlier.

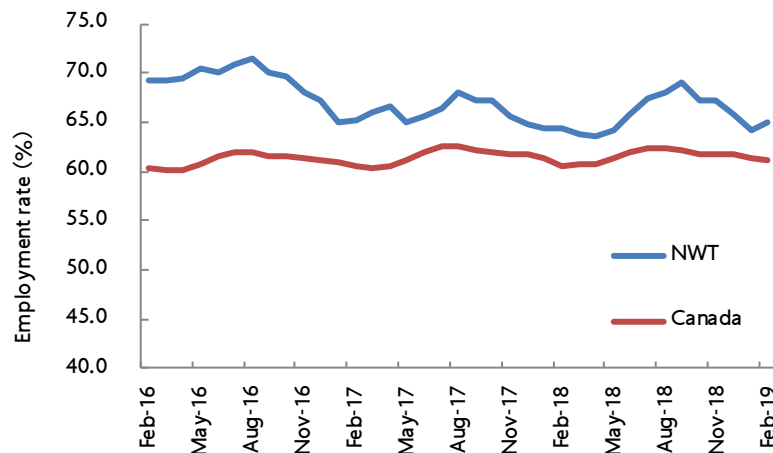
Table 2: Employment & Employment Changes by Selected Characteristics

	2019			Feb-2018	Change from 1 Yr. Ago	
	Feb	Jan	Dec		No.	%
Total Employment	21,100	20,800	21,300	20,900	200	1.0
Full-time	18,900	18,800	19,400	18,000	900	5.0
Part-time	2,200	2,000	1,900	2,900	(700)	(24.1)
Employees	19,600	19,400	19,900	19,600	-	-
Public sector	9,300	9,000	9,300	9,300	-	-
Private sector	10,300	10,500	10,600	10,300	-	-
Self-employment	1,500	1,400	1,400	1,300	200	15.4
Goods-producing industry	3,000	2,900	3,000	3,000	-	-
Services-producing industry	18,100	17,900	18,300	17,900	200	1.1

National highlights

For Canada overall, the employment rate decreased slightly from the previous month to 61.2% in February 2019. Among the provinces and territories, the Northwest Territories (65.1%) had the third highest employment rate after Yukon (71.6%) and Alberta (66.1%).

Figure 1: Employment Rates, NWT, 2015 - 2018



Historical labour force activity

The following table presents historical labour force activity in the Northwest Territories.

Table 3: Labour Force Activity -Northwest Territories

	Population 15 & Over	Labour Force	Employed	Unem- ployed	Not in the Labour Force	Partic- ipation Rate	Unemp- loyment Rate	Employ- ment Rate
Feb-19	32,400	22,900	21,100	1,900	9,500	70.7	8.3	65.1
Jan-19	32,400	22,800	20,800	1,900	9,600	70.4	8.3	64.2
Dec-18	32,300	23,000	21,300	1,700	9,300	71.2	7.4	65.9
Nov-18	32,300	23,100	21,700	1,500	9,200	71.5	6.5	67.2
Oct-18	32,300	23,100	21,700	1,400	9,200	71.5	6.1	67.2
Sep-18	32,400	23,500	22,400	1,100	8,900	72.5	4.7	69.1
Aug-18	32,500	23,700	22,100	1,600	8,700	72.9	6.8	68.0
Jul-18	32,500	23,600	21,900	1,700	8,900	72.6	7.2	67.4
Jun-18	32,500	23,400	21,400	2,000	9,100	72.0	8.5	65.8
May-18	32,500	22,700	20,900	1,900	9,800	69.8	8.4	64.3
Apr-18	32,500	22,500	20,700	1,800	10,000	69.2	8.0	63.7
Mar-18	32,400	22,700	20,700	2,000	9,700	70.1	8.8	63.9
Previous Years:								
Feb-18	32,400	22,800	20,900	1,900	9,600	70.4	8.3	64.5
Feb-17	32,300	22,800	21,100	1,600	9,600	70.6	7.0	65.3
Feb-16	32,200	24,400	22,300	2,100	7,800	75.8	8.6	69.3
Feb-15	32,200	23,600	21,800	1,800	8,600	73.3	7.6	67.7
Feb-14	32,500	24,000	22,100	1,900	8,600	73.8	7.9	68.0
Feb-13	32,600	24,000	22,400	1,600	8,600	73.6	6.7	68.7
Feb-12	32,300	24,500	22,400	2,100	7,800	75.9	8.6	69.3
Feb-11	32,100	23,900	22,200	1,800	8,200	74.5	7.5	69.2
Feb-10	31,800	22,200	20,900	1,300	9,600	69.8	5.9	65.7
Feb-09	31,700	22,500	21,800	700	9,200	71.0	3.1	68.8

Labour Force Survey (LFS) data presented for the Northwest Territories is based on three-month moving averages, with survey counts rounded to the nearest 100 persons.

For additional information on the monthly release of labour force survey results for the Northwest Territories, visit the NWT Bureau of Statistics website at <http://www.statsnwt.ca/> or call (867) 767-9169.

Next Release: April 5, 2019