

# Monthly Labour Force Activity - May 2017 -

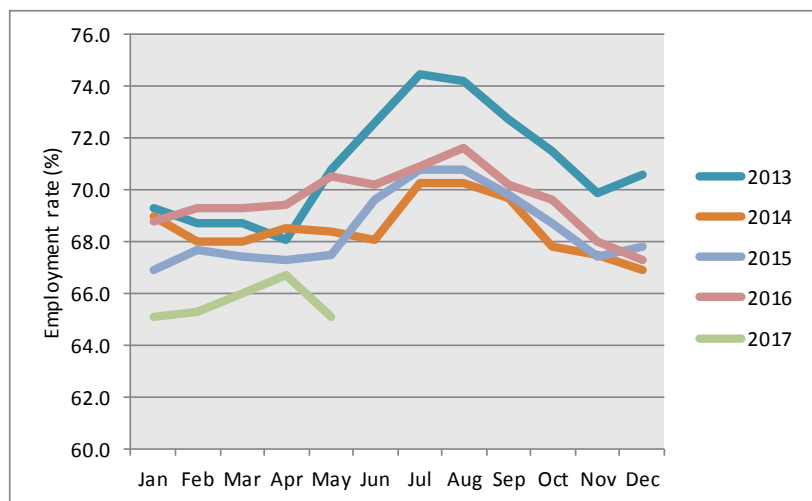
## Overview

Statistics Canada estimates that in May 2017, 21,100 out of 32,400 residents 15 years of age and older were employed in the Northwest Territories, representing an employment rate of 65.1%. Between April and May 2017, employment dropped by 2.3% or 500 persons.

Year-over-year, there were 1,800 less people employed in the NWT compared to May 2016. Most of the job losses occurred in the services-producing industry.

The employment rate also dropped 1.6 percentage points between April and May 2017. This drop contrasts with previous years when employment rates increased or were little changed (Figure 1).

Figure 1: Employment Rates, NWT 2013 - 2017



## National highlights

Nationally, the employment rate in Canada rose 0.6 percentage points to 61.1% in May 2017, while the unemployment rate dropped to 6.8%. Among the provinces and territories, Yukon (74.1%) had the highest employment rate, followed by Alberta (66.6%) and the Northwest Territories (65.1%).

Table 1: Labour Force Statistics - Northwest Territories, May 2017

	May-17	Apr-17	May-16	Change from 12 months ago	
				Number	%
<b>Population 15+</b>	<b>32,400</b>	<b>32,400</b>	<b>32,500</b>	<b>(100)</b>	<b>(0.3)</b>
Labour force	22,400	22,800	24,600	(2,200)	(8.9)
Employment	21,100	21,600	22,900	(1,800)	(7.9)
Full-time	18,700	19,000	19,600	(900)	(4.6)
Part-time	2,400	2,600	3,300	(900)	(27.3)
Unemployment	1,400	1,200	1,700	(300)	(17.6)
Participation rate (%)	69.1	70.4	75.7		
Unemployment rate (%)	6.3	5.3	6.9		
Employment rate (%)	65.1	66.7	70.5		

2017-016

ISSN-0827-3545

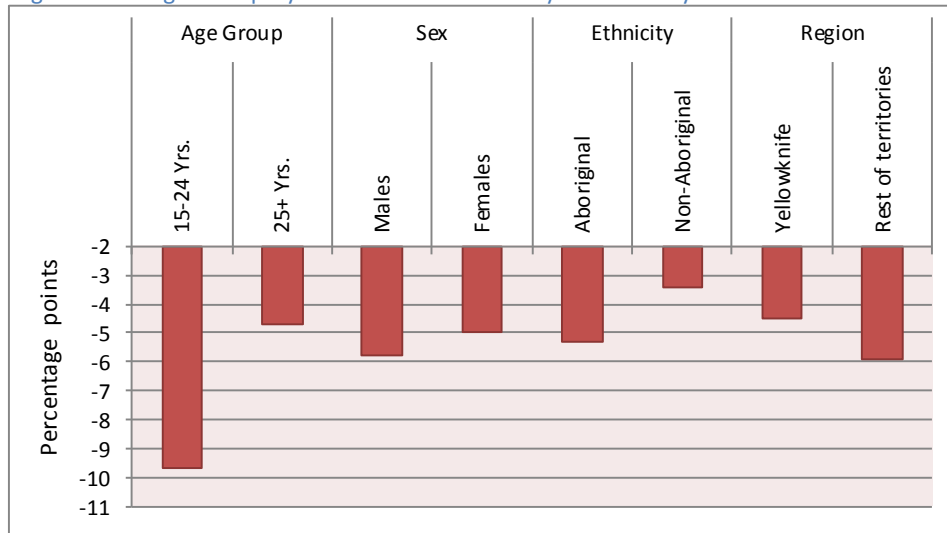


## Employment by key demographic characteristics

In May 2017, there were 1,800 fewer people employed in the NWT compared to the same month last year. The drop in employment was highest among males, persons aged 25 and over, Aboriginal persons, and people living in Yellowknife.

Similarly, year-over-year employment rates declined across all key demographic characteristics (Figure 2). Youths aged 15-24 had the highest decline, followed by those living outside of Yellowknife, and males.

Figure 2: Change in employment rates between May 2016 & May 2017



## Employment by employment type, class of worker, and industry

The number of employed persons decreased for all selected characteristics between May 2016 and May 2017. The only exception was the goods-producing industry where employment was unchanged from May last year (Table 2).

Table 1: Monthly and Yearly Change in Employment by Selected Characteristics

	May-17	Apr-17	May-16	Apr-2017 to May-2017 Change (persons)	May-2016 to May-2017 Change (persons)
Total Employment	21,100	21,600	22,900	(500)	(1,800)
Full-time	18,700	19,000	19,600	(300)	(900)
Part-time	2,400	2,600	3,300	(200)	(900)
Employees	19,500	19,900	21,400	(400)	(1,900)
Public	9,600	9,800	10,900	(200)	(1,300)
Private	10,000	10,100	10,400	(100)	(400)
Self-employment	1,500	1,700	1,500	(200)	-
Goods Producing	3,400	3,400	3,400	-	-
Service Producing	17,600	18,200	19,400	(600)	(1,800)

## Historical labour force activity

Table 2: Labour Force Activity -Northwest Territories

	Population 15 & Over	Labour Force	Employed	Unem- ployed	Not in the Labour Force	Partic- ipation Rate	Unemp- loyment Rate	Employ- ment Rate
May-17	32,400	22,400	21,100	1,400	9,900	69.1	6.3	65.1
Apr-17	32,400	22,800	21,600	1,200	9,600	70.4	5.3	66.7
Mar-17	32,400	22,900	21,400	1,600	9,400	70.7	7.0	66.0
Feb-17	32,300	22,800	21,100	1,600	9,600	70.6	7.0	65.3
Jan-17	32,400	22,700	21,100	1,600	9,600	70.1	7.0	65.1
Dec-16	32,400	23,400	21,800	1,600	9,000	72.2	6.8	67.3
Nov-16	32,500	23,700	22,100	1,600	8,800	72.9	6.8	68.0
Oct-16	32,600	24,400	22,700	1,700	8,200	74.8	7.0	69.6
Sep-16	32,600	24,500	22,900	1,600	8,100	75.2	6.5	70.2
Aug-16	32,700	25,300	23,400	1,900	7,400	77.4	7.5	71.6
Jul-16	32,600	25,100	23,100	2,100	7,500	77.0	8.4	70.9
Jun-16	32,600	24,900	22,900	2,000	7,600	76.4	8.0	70.2
Previous Years:								
May-16	32,500	24,600	22,900	1,700	7,900	75.7	6.9	70.5
May-15	32,000	23,500	21,600	1,900	8,500	73.4	8.1	67.5
May-14	32,300	24,300	22,100	2,200	8,000	75.2	9.1	68.4
May-13	32,500	25,200	23,000	2,200	7,300	77.5	8.7	70.8
May-12	32,400	24,700	22,500	2,200	7,700	76.2	8.9	69.4
May-11	32,200	24,700	22,700	2,000	7,500	76.7	8.1	70.5
May-10	31,900	22,400	20,700	1,700	9,600	70.2	7.6	64.9
May-09	31,800	22,700	21,100	1,600	9,100	71.4	7.0	66.4
May-08	31,800	23,600	22,000	1,600	8,200	74.2	6.8	69.2
May-07	31,500	24,700	23,300	1,400	6,800	78.4	5.7	74.0

Information on the territorial labour market is a result of the extension of Statistics Canada's national labour force survey (LFS) to the Northwest Territories. Data presented for the Northwest Territories is based on three-month moving averages, with survey counts rounded to the nearest 100 persons.

For additional information on the monthly release of labour force survey results for the Northwest Territories, visit the NWT Bureau of Statistics website at <http://www.statsnwt.ca/> or call (867) 767-9169.

Next Release: July 7, 2017