

Released: June 8, 2018

Monthly Labour Force Activity - May 2018-

Overview

Labour Force Survey information released by Statistics Canada today estimates that 22,700 residents of the Northwest Territories (NWT) were in the labour force in May 2018. Of these persons, 20,900 were employed, representing an employment rate of 64.3%. Of the employed, 87% worked full-time while 13% worked part-time.

Month-over-month comparison shows that NWT employment increased by 200 persons in May 2018, all in full-time employment. Meanwhile, the number of people seeking employment increased slightly, prompting an increase in the unemployment rate to 8.4%.

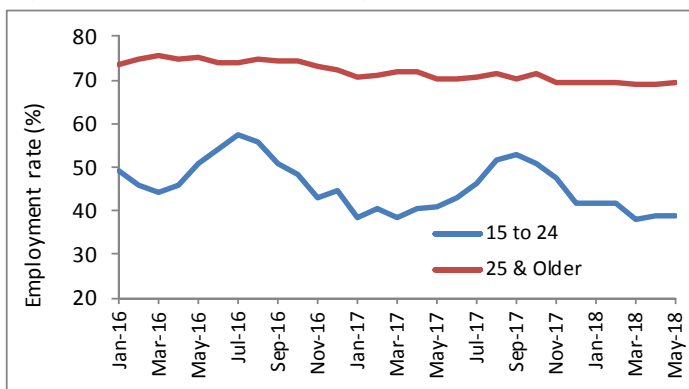
Table 1: Labour Force Statistics - Northwest Territories, May 2018

	May-18	Apr-18	May-17	Change from 12 months ago		
				Number		%
Population 15 & Older	32,500	32,500	32,400	100	↑	0.3
Labour force	22,700	22,500	22,400	300	↑	1.3
Employment	20,900	20,700	21,100	(200)	↓	(0.9)
Full-time	18,200	17,800	18,700	(500)	↓	(2.7)
Part-time	2,700	2,900	2,400	300	↑	12.5
Unemployment	1,900	1,800	1,400	500	↑	35.7
Not in labour force	9,800	10,000	9,900	(100)	↓	(1.0)
Participation rate (%)	69.8	69.2	69.1			
Unemployment rate (%)	8.4	8.0	6.3			
Employment rate (%)	64.3	63.7	65.1			

Employment by age

Figure 1 shows the seasonal fluctuations in the employment rates for youth aged 15 to 24. At 38.9%, the employment rate for this age group was unchanged from last month, following March (38.2%) when it dipped to its lowest since July 2010.

Figure 1: Employment Rates by Age Group, Jan 2016 - May 2018



2018-014

ISSN-0827-3545



Employment by employment type, class of worker, and industry

In May 2018, employment in the public sector was up by 300 compared to 12 months ago. Over the same period, private sector employment and self-employment dropped by a combined total of 400 persons. Gains in part-time employment were offset by losses in full-time employment.

Year-over-year employment levels by industry had contrasting results. The services-producing industry employed 600 more persons in May 2018, while employment in the goods-producing industry declined by 700.

Table 2: Monthly and Yearly Change in Employment by Selected Characteristics

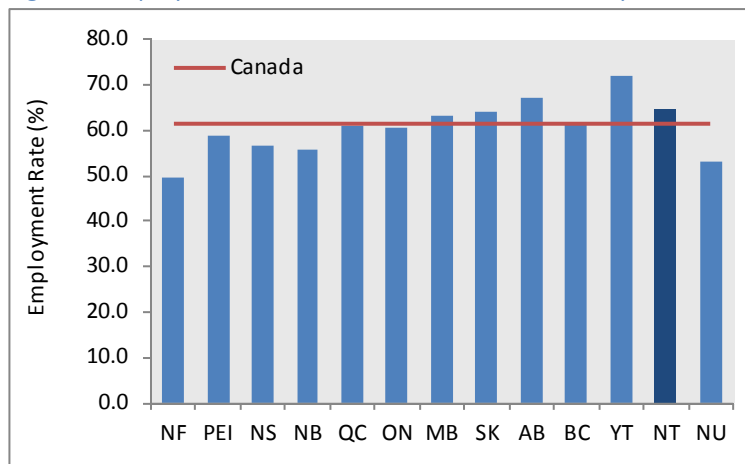
	May-18	Apr-18	May-17	Change (persons) from	
				Apr-18	May-17
Total Employment	20,900	20,700	21,100	200	(200)
Full-time	18,200	17,800	18,700	400	(500)
Part-time	2,700	2,900	2,400	(200)	300
Employees	19,500	19,300	19,500	200	0
Public	9,900	9,800	9,600	100	300
Private	9,700	9,500	10,000	200	(300)
Self-employment	1,400	1,500	1,500	(100)	(100)
Goods-producing sector	2,700	2,800	3,400	(100)	(700)
Services-producing sector	18,200	17,900	17,600	300	600

National highlights

For Canada overall, the employment rate increased slightly from the previous month to 61.3% in May 2018. Among the provinces and territories, Yukon (73.4%) maintained the highest employment rate, followed by Alberta (67.1%) and the Northwest Territories (64.3%).

The NWT's (8.4%) unemployment rate was the fifth highest in the country after Newfoundland and Labrador (15.6%), Nunavut (12.8%), Prince Edward Island (11.8%), and New Brunswick (8.6%). The national unemployment rate was 6.1%.

Figure 2: Employment Rates, Provinces & Territories, May 2018



Historical labour force activity

The following table presents historical labour force activity in the Northwest Territories.

Table 3: Labour Force Activity -Northwest Territories

	Population 15 & Over	Labour Force	Employed	Unem- ployed	Not in the Labour Force	Partic- ipation Rate	Unemp- loyment Rate	Employ- ment Rate
Apr-18	32,500	22,500	20,700	1,800	10,000	69.2	8.0	63.7
Mar-18	32,400	22,700	20,700	2,000	9,700	70.1	8.8	63.9
Feb-18	32,400	22,800	20,900	1,900	9,600	70.4	8.3	64.5
Jan-18	32,400	22,900	20,900	2,000	9,500	70.7	8.7	64.5
Dec-17	32,400	22,600	21,000	1,600	9,900	69.8	7.1	64.8
Nov-17	32,400	22,800	21,300	1,500	9,600	70.4	6.6	65.7
Oct-17	32,400	23,400	21,800	1,500	9,000	72.2	6.4	67.3
Sep-17	32,300	23,300	21,700	1,600	9,000	72.1	6.9	67.2
Aug-17	32,300	23,400	22,000	1,400	9,000	72.4	6.0	68.1
Jul-17	32,400	23,000	21,500	1,500	9,300	71.0	6.5	66.4
Jun-17	32,400	22,700	21,300	1,400	9,700	70.1	6.2	65.7
May-17	32,400	22,400	21,100	1,400	9,900	69.1	6.3	65.1
Previous Years:								
Apr-17	32,400	22,800	21,600	1,200	9,600	70.4	5.3	66.7
Apr-16	32,400	24,100	22,500	1,600	8,200	74.4	6.6	69.4
Apr-15	32,100	23,200	21,600	1,600	8,800	72.3	6.9	67.3
Apr-14	32,400	24,200	22,200	2,100	8,200	74.7	8.7	68.5
Apr-13	32,600	24,200	22,200	2,000	8,400	74.2	8.3	68.1
Apr-12	32,400	24,700	22,500	2,200	7,600	76.2	8.9	69.4
Apr-11	32,200	24,600	22,800	1,800	7,600	76.4	7.3	70.8
Apr-10	31,900	22,000	20,400	1,600	9,900	69.0	7.3	63.9
Apr-09	31,700	22,700	21,600	1,100	9,100	71.6	4.8	68.1
Apr-08	31,800	23,800	22,300	1,400	8,000	74.8	5.9	70.1

Information on the territorial labour market is a result of the extension of Statistics Canada's national Labour Force Survey (LFS) to the Northwest Territories. Data presented for the Northwest Territories is based on three-month moving averages, with survey counts rounded to the nearest 100 persons.

For additional information on the monthly release of labour force survey results for the Northwest Territories, visit the NWT Bureau of Statistics website at <http://www.statsnwt.ca/> or call (867) 767-9169.

Next Release: July 6, 2018