

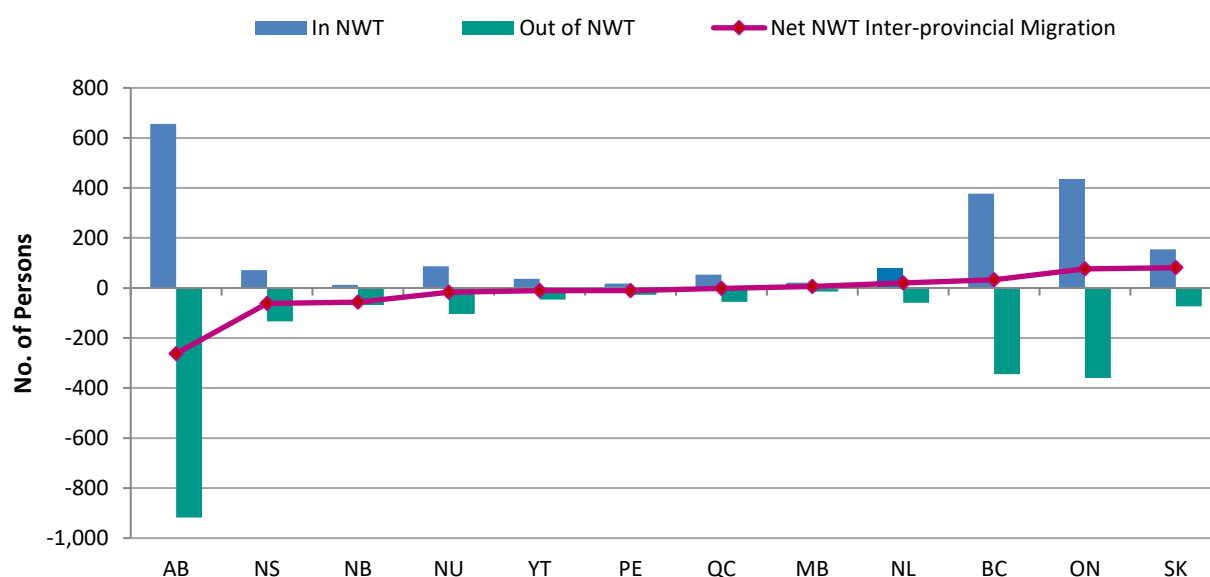


## Northwest Territories Population January 2025

On January 1, 2025 Statistics Canada estimated that 45,074 people were living in the Northwest Territories. Between January 1, 2024 and January 1, 2025, the population in the Northwest Territories increased by 575 persons (+1.3%). The components of natural increase during this one-year period consisted of 483 births and 330 deaths, resulting in a net increase of 153 persons. There was a net loss of 202 interprovincial migrants and a net gain of 624 international migrants.

Historically, Alberta has accounted for the largest number of interprovincial migrants both entering and exiting NWT. Between January 1, 2024 and January 1, 2025, 656 persons moved from Alberta, while 918 persons left the NWT for Alberta, resulting in the net loss of 262 persons. Even though Ontario and BC had the second and third largest number of persons moving in and out of the NWT, Saskatchewan made the largest net contribution of new interprovincial migrants to the Northwest Territories (+81 persons) followed by Ontario (+76 persons) (Figure 1).

**Figure 1** Interprovincial Migration by Province and Territory, Northwest Territories, January 1, 2024 to January 1, 2025



At the national level, between January 1, 2024 and January 1, 2025, Canada's population increased by 1.8%. Alberta experienced the largest population increase (+3.5%) followed by Yukon, Manitoba and Saskatchewan, all exceeding Canada's growth.

**Table 1 Population Estimates and Annual Rate of Growth, by Province and Territory  
January 1, 2022 to January 1, 2025**

	2025 01-Jan	(%) Change	2024 01-Jan	(%) Change	2023 01-Jan	(%) Change	2022 01-Jan	(%) Change
Canada	41,528,680	1.8	40,784,356	3.2	39,527,986	2.5	38,566,032	1.3
<b>Northwest Territories</b>	<b>45,074</b>	<b>1.3</b>	<b>44,499</b>	<b>0.1</b>	<b>44,446</b>	<b>-0.7</b>	<b>44,752</b>	<b>0.7</b>
Nunavut	41,414	1.5	40,794	0.6	40,569	0.7	40,271	1.3
Yukon	47,126	2.6	45,936	3.2	44,509	3.3	43,067	2.2
British Columbia	5,722,318	1.7	5,627,961	3.4	5,443,002	2.9	5,287,422	2.1
Alberta	4,960,097	3.5	4,791,876	4.3	4,595,851	2.9	4,465,137	1.1
Saskatchewan	1,250,909	2.0	1,226,848	2.6	1,195,464	2.1	1,171,007	0.4
Manitoba	1,504,023	2.0	1,475,046	2.9	1,432,984	2.4	1,399,970	1.2
Ontario	16,182,641	1.5	15,944,379	3.5	15,402,095	2.7	14,995,433	1.5
Quebec	9,111,629	1.7	8,956,326	2.2	8,762,928	1.7	8,616,610	0.8
New Brunswick	858,963	1.7	844,433	2.9	820,576	2.7	798,713	1.8
Nova Scotia	1,079,627	1.1	1,068,120	2.7	1,040,187	2.9	1,010,529	2.1
Prince Edward Island	179,280	1.7	176,318	3.7	170,077	3.6	164,164	3.1
Newfoundland & Labrador	545,579	0.7	541,820	1.2	535,298	1.2	528,957	0.6

The historical detailed components of population change for the Northwest Territories are presented in Table 2.

These population estimates are based on the 2021 Census, adjusted for census net undercoverage. Data may be revised over the coming years, and it is possible that trends will change as a result of future revisions.

For more information about these estimates or for community level population estimates and projections, please visit the NWT Bureau of Statistics website at <http://www.statsnwt.ca> or call (867) 767-9169.

**Table 2**      **Components of Population Change, by Time Period**  
**Northwest Territories – July 1, 2018 to January 1, 2025**

		Beginning Population	Ending Population	Births	Deaths	Interprovincial Migration			Net International	Error of Closure
						In	Out	Net		
Quarterly										
2024	Oct-Dec	44,936	45,074	121	84	234	277	-43	144	-
	Jul-Sep	44,731	44,936	124	88	545	482	63	106	-
	Apr-Jun	44,686	44,731	113	73	530	695	-165	170	-
	Jan-Mar	44,499	44,686	125	85	692	749	-57	204	-
2023	Oct-Dec	44,495	44,499	119	82	154	335	-181	148	-
	Jul-Sep	44,681	44,495	124	86	233	610	-377	153	-
	Apr-Jun	44,468	44,681	110	72	610	589	21	154	-
	Jan-Mar	44,446	44,468	122	80	723	890	-167	147	-
2022	Oct-Dec	44,588	44,446	118	80	187	460	-273	93	-
	Jul-Sep	44,634	44,588	111	83	323	488	-165	91	-
	Apr-Jun	44,788	44,634	117	71	696	971	-275	75	-
	Jan-Mar	44,752	44,788	156	78	505	616	-111	69	-
2021	Oct-Dec	44,593	44,752	121	79	308	259	49	68	-
	Jul-Sep	44,579	44,593	153	75	463	565	-102	38	-
	Apr-Jun	44,679	44,579	131	66	566	775	-209	69	-25
	Jan-Mar	44,432	44,679	145	83	664	480	184	58	-57
2020	Oct-Dec	44,395	44,432	136	69	242	256	-14	41	-57
	Jul-Sep	44,504	44,395	163	77	207	344	-137	0	-58
Annual										
2023-2024	July - June	44,681	44,731	481	326	1,468	2,248	-780	675	-
2022-2023	July - June	44,634	44,681	461	315	1,619	2,203	-584	485	-
2021-2022	July - June	44,579	44,634	547	303	1,765	2,204	-439	250	-
2020-2021	July - June	44,504	44,579	575	295	1,445	1,621	-176	168	(197)
2019-2020	July - June	44,442	44,504	567	253	1,814	1,983	-169	147	(230)
2018-2019	July - June	44,536	44,442	597	226	1,578	2,047	-469	232	(228)

*Note:* 1. Net International represents the net total of all Immigrants, Emigrants, Returning Canadians, Non-Permanent Residents and Individuals Temporarily Abroad.

2. Error of Closure represents the difference in population change as measured by the individual components of growth and that observed using 2021, 2016, 2011 and 2006 census-based population estimates.

*Source:* Statistics Canada, Demography Division.