

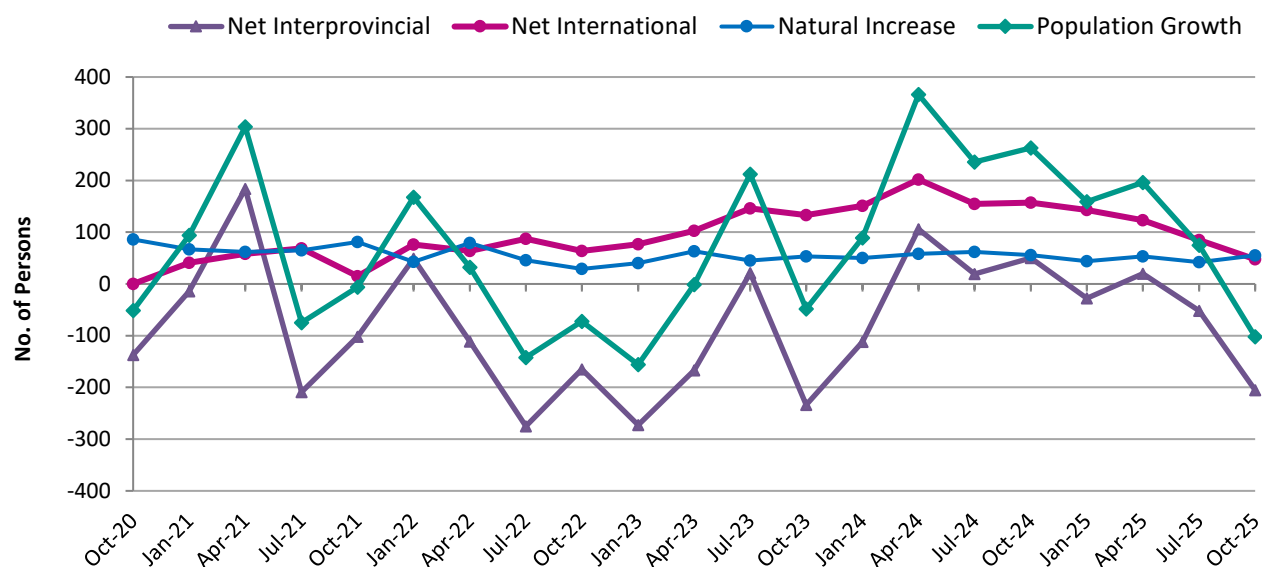


## Northwest Territories Population October 2025

On October 1, 2025 Statistics Canada estimated that 45,848 people were living in the Northwest Territories. Between October 1, 2024 and October 1, 2025, the population in the Northwest Territories increased by 328 persons (+0.7%). The components of natural increase during this one-year period consisted of 474 births and 280 deaths, resulting in a net increase of 194 persons. There was a net loss of 265 interprovincial migrants and a net gain of 399 international migrants.

In the NWT, population growth fluctuates based on migration patterns; generally, net interprovincial migration has been mostly negative, offset by positive net international migration and natural increase. NWT's net international migration had been increasing since late 2020. However, after reaching its highest level in the first quarter of 2024, it has been on a decline (Figure 1).

**Figure 1** Migration Patterns and Population Growth,  
Northwest Territories, October 1, 2020 to October 1, 2025



At the national level, Canada's population increased by 0.2% between October 1, 2024 and October 1, 2025, the smallest annual increase since the beginning of comparable data series (1971). Alberta experienced the largest population increase followed by Nunavut and Prince Edward Island. Both British Columbia and Ontario saw their first annual population decline since 1971 (when comparable data became available).

**Table 1 Population Estimates and Annual Rate of Growth, by Province and Territory  
October 1, 2022 to October 1, 2025**

	2025 01-Oct	(%) Change	2024 01-Oct	(%) Change	2023 01-Oct	(%) Change	2022 01-Oct	(%) Change
Canada	41,575,585	0.2	41,494,132	2.5	40,467,722	3.0	39,284,491	2.1
<b>Northwest Territories</b>	<b>45,848</b>	<b>0.7</b>	<b>45,520</b>	<b>2.1</b>	<b>44,566</b>	<b>0.0</b>	<b>44,559</b>	<b>0.0</b>
Nunavut	41,919	1.0	41,486	1.0	41,089	1.0	40,677	1.1
Yukon	48,261	0.7	47,939	4.4	45,898	3.9	44,169	2.4
British Columbia	5,683,201	-0.2	5,696,852	2.2	5,572,694	3.1	5,406,059	2.6
Alberta	5,040,871	1.7	4,957,075	4.3	4,752,173	4.2	4,560,275	2.5
Saskatchewan	1,266,234	0.7	1,256,983	2.8	1,222,152	2.8	1,188,295	1.7
Manitoba	1,507,057	0.4	1,500,464	2.6	1,462,439	2.7	1,424,475	2.0
Ontario	16,191,372	-0.2	16,228,152	2.6	15,823,956	3.4	15,305,369	2.4
Quebec	9,058,089	0.2	9,038,268	1.8	8,882,501	1.9	8,718,914	1.3
New Brunswick	868,630	0.6	863,841	2.8	840,130	2.9	816,420	2.6
Nova Scotia	1,091,857	0.3	1,088,273	2.4	1,062,825	2.9	1,033,146	2.6
Prince Edward Island	182,508	0.9	180,877	2.7	176,173	4.3	168,939	3.3
Newfoundland & Labrador	549,738	0.2	548,402	1.3	541,126	1.5	533,194	0.9

The historical detailed components of population change for the Northwest Territories are presented in Table 2.

These population estimates are based on the 2021 Census, adjusted for census net undercoverage. Data may be revised over the coming years, and it is possible that trends will change as a result of future revisions.

For more information about these estimates or for community level population estimates and projections, please visit the NWT Bureau of Statistics website at <http://www.statsnwt.ca> or call (867) 767-9169.

**Table 2** Components of Population Change, by Time Period  
Northwest Territories – July 1, 2019 to October 1, 2025

		Beginning Population	Ending Population	Births	Deaths	Interprovincial Migration			Net International	Error of Closure
						In	Out	Net		
<b>Quarterly</b>										
2025	Jul-Sep	45,950	45,848	131	76	334	539	-205	48	0
	Apr-Jun	45,875	45,950	110	68	653	705	-52	85	0
	Jan-Mar	45,679	45,875	116	63	579	559	20	123	0
2024	Oct-Dec	45,520	45,679	117	73	248	276	-28	143	0
	Jul-Sep	45,257	45,520	128	72	537	487	50	157	0
	Apr-Jun	45,021	45,257	127	65	627	608	19	155	0
	Jan-Mar	44,655	45,021	119	61	786	680	106	202	0
2023	Oct-Dec	44,566	44,655	123	73	195	307	-112	151	0
	Jul-Sep	44,614	44,566	125	72	320	554	-234	133	0
	Apr-Jun	44,402	44,614	110	65	610	589	21	146	0
	Jan-Mar	44,403	44,402	124	61	723	890	-167	103	0
2022	Oct-Dec	44,559	44,403	121	81	187	460	-273	77	0
	Jul-Sep	44,631	44,559	112	83	323	488	-165	64	0
	Apr-Jun	44,773	44,631	117	71	696	971	-275	87	0
	Jan-Mar	44,741	44,773	157	78	505	616	-111	64	0
2021	Oct-Dec	44,573	44,741	122	79	308	259	49	76	0
	Jul-Sep	44,579	44,573	156	75	463	565	-102	15	0
	Apr-Jun	44,679	44,579	131	66	566	775	-209	69	-25
<b>Annual</b>										
2024-2025	July - June	45,257	45,950	471	276	1,864	1,874	-10	508	0
2023-2024	July - June	44,614	45,257	494	271	1,763	1,984	-780	641	0
2022-2023	July - June	44,631	44,614	467	290	1,619	2,203	-584	390	0
2021-2022	July - June	44,579	44,631	552	303	1,765	2,204	-439	242	0
2020-2021	July - June	44,504	44,579	575	295	1,445	1,621	-176	168	-197
2019-2020	July - June	44,442	44,504	567	253	1,814	1,983	-169	147	-230
2018-2019	July - June	44,536	44,442	597	226	1,578	2,047	-469	232	-228

*Note:* 1. Net International represents the net total of all Immigrants, Emigrants, Returning Canadians, Non-Permanent Residents and Individuals Temporarily Abroad.

2. Error of Closure represents the difference in population change as measured by the individual components of growth and that observed using 2021, 2016, 2011 and 2006 census-based population estimates.

*Source:* Statistics Canada, Demography Division.