

Consumer Price Index - February 2017 -

Information released today by Statistics Canada indicates that the Yellowknife All-Items Consumer Price Index in February rose 2.1% compared to one year ago. By comparison, the annual price increase was 2.0% for Canada, 2.7% for Whitehorse, 2.5% for Edmonton and 2.2% for Iqaluit.

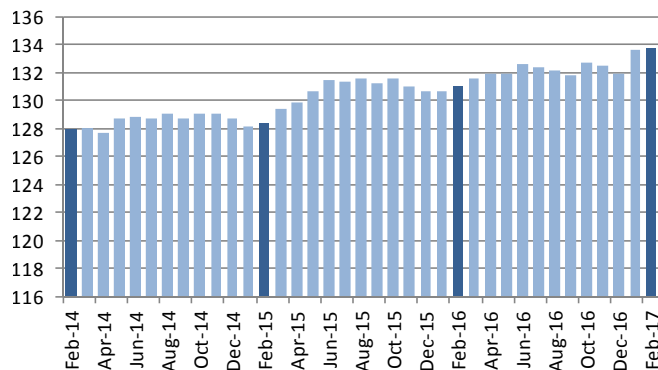
ALL-ITEMS CONSUMER PRICE INDEX (2002=100)

	17-Feb	17-Jan	16-Feb	% Change from		12-Month Average		
				17-Jan	16-Feb	16-Mar	15-Mar	%
				17-Jan	16-Feb	17-Feb	16-Feb	Change
Yellowknife	133.7	133.6	131.0	0.1	2.1	132.4	130.9	1.1
Canada	129.7	129.5	127.1	0.2	2.0	128.8	126.9	1.5
Edmonton	136.6	136.9	133.3	-0.2	2.5	135.5	133.8	1.3
Whitehorse	127.0	126.9	123.7	0.1	2.7	125.9	124.5	1.1
Iqaluit	124.4	124.4	121.7	-	2.2	123.9	120.9	2.5

Compared to February 2016, consumer prices increased in Yellowknife for most major components with the exception of food (-3.0%). The increase in energy prices (11.3%) was a result of higher prices for gasoline and fuel oil and other fuels which grew by 20.5% and 17.3% respectively.

CPI - All Items

Yellowknife, February 2014 to February 2017



As indicated in the graph, month over month prices were relatively stable between February 2014 and February 2015. Since February 2015, the overall Yellowknife index has been on an upward trend, most recently increasing by 0.1% between January and February 2017.

CONSUMER PRICE INDEX, FEBRUARY 2017
SELECTED INDEXES, YELLOWKNIFE (2002 = 100)

	17-Feb	17-Jan	16-Feb	% Change from	
				17-Jan	16-Feb
All Items	133.7	133.6	131.0	0.1	2.1
Food	141.2	141.2	145.5	-	-3.0
Food from Stores	140.4	140.4	146.0	-	-3.8
Food from Restaurants	142.9	142.9	141.8	-	0.8
Shelter	149.9	150.0	149.1	-0.1	0.5
Water, Fuel & Electricity	189.3	189.6	177.4	-0.2	6.7
Household Operations & Furnishings	115.5	116.2	114.4	-0.6	1.0
Household Operations	122.5	122.5	122.8	-	-0.2
Household Furnishings	100.2	102.3	96.7	-2.1	3.6
Clothing & Footwear	106.8	106.7	101.4	0.1	5.3
Clothing	100.1	99.9	92.5	0.2	8.2
Footwear	97.5	96.8	93.7	0.7	4.1
Clothing Accessories & Jewellery	150.2	150.7	153.5	-0.3	-2.1
Clothing Material, Notions & Services	120.9	123.0	110.4	-1.7	9.5
Transportation	131.6	131.7	122.8	-0.1	7.2
Private Transportation	131.3	131.5	121.9	-0.2	7.7
Public Transportation	135.4	135.0	129.3	0.3	4.7
Health & Personal Care	121.9	122.3	119.5	-0.3	2.0
Health Care	120.5	119.7	115.6	0.7	4.2
Personal Care	122.7	124.8	123.3	-1.7	-0.5
Recreation, Education & Reading	107.8	106.2	103.3	1.5	4.4
Recreation	103.5	101.7	98.8	1.8	4.8
Education & Reading	132.5	132.8	130.1	-0.2	1.8
Alcoholic Beverages & Tobacco Products	170.4	169.9	165.9	0.3	2.7
Alcoholic Beverages	145.3	144.9	144.6	0.3	0.5
Tobacco Products & Smokers' Supplies	204.6	204.1	193.4	0.2	5.8
SPECIAL AGGREGATES:					
All-Items Excluding:					
Food	132.2	132.1	128.5	0.1	2.9
Energy	129.9	129.7	128.3	0.2	1.2
Shelter	126.5	126.4	123.3	0.1	2.6
Alcoholic Beverages	133.4	133.3	130.7	0.1	2.1
Tobacco Products	132.4	132.3	129.9	0.1	1.9
Housing (1986 Definition)	139.3	139.6	138.5	-0.2	0.6
ENERGY AND ITS COMPONENTS:					
Energy	171.2	172.6	153.8	-0.8	11.3
Electricity	190.9	190.9	188.0	-	1.5
Fuel Oil And Other Fuels	209.0	209.0	178.1	-	17.3
Natural Gas
Gasoline	135.9	139.5	112.8	-2.6	20.5
Fuel, Parts and Supplies for Rect'l Vehicles

Notes:

1. Source: Statistics Canada, CANSIM Table 326-0020
2. CPI values for Yellowknife and Whitehorse include estimates of price changes for owned accommodation based on the price of rental accommodation. As a result, the all-items indexes published for these centres are not strictly comparable to those for Canada and Edmonton.

Next release of CPI: April 21, 2017.