

## Consumer Price Index July 2020

During the past few months, COVID-19 has restricted the movement of people and forced many businesses to change their normal operations. This has affected how Statistics Canada conducts the Consumer Price Index in July; in-person data collection was done remotely, supplemented with alternate data sources, and a higher level of data imputation occurred due to the reduced availability of some products and services.

**Table 1: All-Items Consumer Price Index (2002 = 100)**

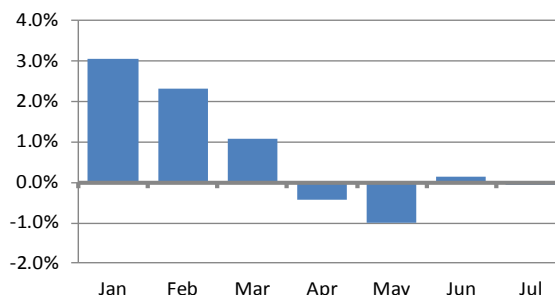
	20-Jul	20-Jun	19-Jul	% Change from		12-Month Average		
				20-Jun	19-Jul	19-Aug	18-Aug	%
				20-Jun	19-Jul	20-Jul	19-Jul	Change
<b>Yellowknife</b>	<b>139.1</b>	<b>139.3</b>	<b>139.2</b>	<b>-0.1</b>	<b>-0.1</b>	<b>139.4</b>	<b>138.0</b>	<b>1.0</b>
Canada	137.2	137.2	137.0	0.0	0.1	136.6	134.9	1.3
Edmonton	145.2	145.0	143.8	0.1	1.0	144.2	142.2	1.4
Whitehorse	134.2	134.3	135.1	-0.1	-0.7	134.4	131.9	1.9
Iqaluit	131.3	131.3	132.8	0.0	-1.1	131.9	130.6	1.0

Statistics Canada indicates that in July 2020 the Yellowknife All-Items Consumer Price Index fell by 0.1% compared to one year ago. By comparison, the annual price change in July was +0.1% for Canada, +1.0% for Edmonton, -0.7% for Whitehorse and -1.1% for Iqaluit.

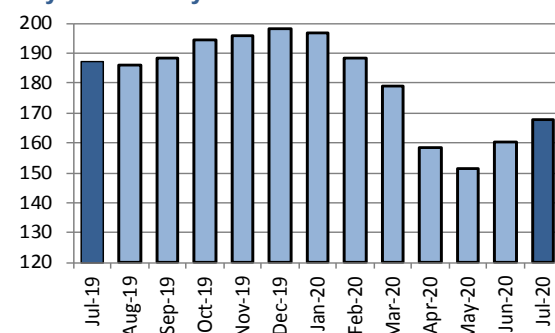
Between July 2019 and July 2020, Yellowknife consumer prices decreased in five of the eight major components. Clothing and footwear experienced the largest decrease (-1.9%) followed by food (-0.8%).

Energy and its components also fell between July 2019 and July 2020. Fuel oil & other fuels declined by 19.0% between July 2019 and July 2020 and gasoline fell by 14.4% resulting in an overall decrease of 10.5% in energy prices. Declines in month-over-month energy prices since January 2020 reversed this summer with June and July posting increases of 5.8% and 4.6% respectively.

**Annual (12 month) Change in Yellowknife CPI  
January 2020 to July 2020**



**Yellowknife CPI - Energy  
July 2019 to July 2020**



**TABLE 2: CONSUMER PRICE INDEX, JULY 2020**  
**SELECTED INDEXES, YELLOWKNIFE (2002 = 100)**

	20-Jul	20-Jun	19-Jul	% Change from	
				20-Jun	19-Jul
All Items	139.1	139.3	139.2	-0.1	-0.1
Food	146.9	146.2	148.1	0.5	-0.8
Food from Stores	144.0	142.8	146.5	0.8	-1.7
Food from Restaurants	154.9	155.7	152.1	-0.5	1.8
Shelter	159.7	158.6	159.0	0.7	0.4
Water, Fuel & Electricity	190.5	183.8	204.1	3.6	-6.7
Household Operations & Furnishings	112.9	113.1	113.5	-0.2	-0.5
Household Operations	120.4	121.3	122.4	-0.7	-1.6
Household Furnishings	96.1	95.1	94.0	1.1	2.2
Clothing & Footwear	106.1	107.3	108.1	-1.1	-1.9
Clothing	98.4	100.0	100.5	-1.6	-2.1
Footwear	92.3	92.7	96.3	-0.4	-4.2
Clothing Accessories & Jewellery	154.1	154.5	157.8	-0.3	-2.3
Clothing Material, Notions & Services	162.8	162.8	142.5	-	14.2
Transportation	141.4	143.6	140.8	-1.5	0.4
Private Transportation	136.0	137.4	132.7	-1.0	2.5
Public Transportation	171.3	177.0	183.4	-3.2	-6.6
Health & Personal Care	125.5	124.5	125.9	0.8	-0.3
Health Care	124.8	124.1	124.4	0.6	0.3
Personal Care	126.6	125.3	127.6	1.0	-0.8
Recreation, Education & Reading	108.5	108.8	109.1	-0.3	-0.5
Recreation	103.9	104.3	104.7	-0.4	-0.8
Education & Reading	134.9	134.9	134.4	-	0.4
Alcoholic Beverages & Tobacco Products	183.4	183.3	181.6	0.1	1.0
Alcoholic Beverages	145.8	145.6	146.3	0.1	-0.3
Tobacco Products & Smokers' Supplies	244.7	244.7	236.7	-	3.4
<b>ENERGY AND ITS COMPONENTS:</b>					
Energy	167.6	160.3	187.2	4.6	-10.5
Electricity	202.4	202.4	202.4	-	-
Fuel Oil and Other Fuels	187.7	168.6	231.7	11.3	-19.0
Natural Gas	..	..	..	..	..
Gasoline	131.6	125.4	153.7	4.9	-14.4
Fuel, Parts and Supplies for Rect'l Vehicles	..	..	..	..	..

**Notes:**

Source: Statistics Canada, Table 18-10-0004-01 Consumer Price Index, monthly, not seasonally adjusted.

CPI values for Yellowknife and Whitehorse include estimates of price changes for owned accommodation based on the price of rental accommodation. As a result, the all-items indexes published for these centres are not strictly comparable to those for Canada and Edmonton.

Next release of CPI: September 16, 2020.